

Product Datasheet

ATG3 Antibody (orb1240184)

Description

ATG3 Antibody

Species/Host

Rabbit

Reactivity

Human, Mouse, Rat

Conjugation

Unconjugated

Tested

ELISA, IF, IHC-P, WB

Applications

Immunogen

ATG3 antibody was raised against an 18 amino acid synthetic peptide near the center of human ATG3. The immunogen is located within amino acids 180 - 230 of ATG3.

Target

ATG3

Preservatives

ATG3 Antibody is supplied in PBS containing 0.02% sodium azide.

Form/Appearance

Liquid

Concentration

1 mg/mL

Storage

ATG3 antibody can be stored at 4°C for three months and -20°C, stable for up to one year. As with all antibodies care should be taken to avoid repeated freeze thaw cycles. Antibodies should not be exposed to prolonged high temperatures.

Note

For research use only

Application notes

ATG3 antibody can be used for detection of ATG3 by Western blot at 1 - 2 µg/mL. Antibody can also be used for immunohistochemistry starting at 5 µg/mL. For immunofluorescence start at 20 µg/mL. Antibody validated: Western Blot in mouse samples; Immunohistochemistry in human samples and Immunofluorescence in human samples. All other applications and species not yet tested.

Isotype

IgG

Clonality

Polyclonal

Uniprot ID

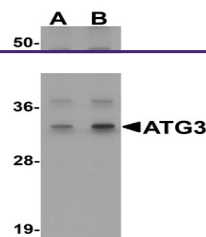
[Q9NT62](#)

NCBI

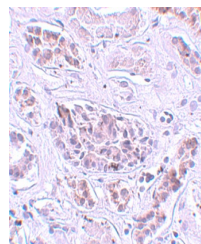
[NP_071933](#)

Dilution Range

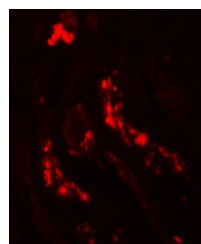
ATG3 antibody can be used for detection of ATG3 by Western blot at 1 - 2 µg/mL. Antibody can also be used for immunohistochemistry starting at 5 µg/mL. For immunofluorescence start at 20 µg/mL. Antibody validated: Western Blot in mouse samples; Immunohistochemistry in human samples and



Western blot analysis of ATG3 in Mouse kidney tissue



Immunohistochemistry of ATG3 in human kidney tissue



Immunofluorescence of ATG3 in human kidney tissue