

Product Datasheet

TIMD4 Antibody (orb1240179)

Description

TIMD4 Antibody

Species/Host

Rabbit

Reactivity

Human, Mouse

Conjugation

Unconjugated

Tested

ELISA, ICC, IF, IHC-P, WB

Applications

Immunogen

TIM-4 antibody was raised against a 16 amino acid synthetic peptide from near the center of human TIM-4. The immunogen is located within amino acids 60 - 110 of TIM-4.

Target

TIMD4

Preservatives

TIM-4 Antibody is supplied in PBS containing 0.02% sodium azide.

Form/Appearance

Liquid

Concentration

1 mg/mL

Storage

TIM-4 antibody can be stored at 4°C for three months and -20°C, stable for up to one year. As with all antibodies care should be taken to avoid repeated freeze thaw cycles. Antibodies should not be exposed to prolonged high temperatures.

Note

For research use only

Application notes

TIM-4 antibody can be used for the detection of TIM-4 by Western blot at 2 µg/mL. Antibody can also be used for immunocytochemistry starting at 10 µg/mL and Immunohistochemistry starting at 2 µg/mL. For immunofluorescence start at 20 µg/mL. Antibody validated: Western Blot in mouse samples; Immunohistochemistry in human and mouse samples; Immunocytochemistry in human samples and Immunofluorescence in human samples. All other applications and species not yet tested.

Isotype

IgG

Clonality

Polyclonal

MW

Observed: 45 kDa

Uniprot ID

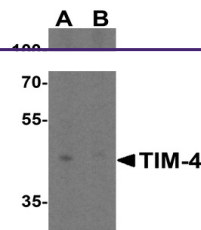
Q96H15

NCBI

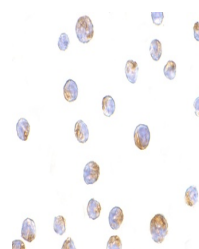
NP_612388

Dilution Range

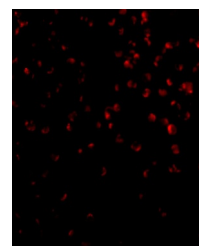
TIM-4 antibody can be used for the detection of TIM-4 by Western blot at 2 µg/mL. Antibody can also be used for immunocytochemistry starting at 10 µg/mL



Western blot analysis of TIM-4 in RAW264...



Immunocytochemistry of TIM-4 in Jurkat c...



Immunofluorescence of TIM-4 in Jurkat ce...