

## Product Datasheet

### ATG9A Antibody (orb1240177)

## Description

ATG9A Antibody

### Species/Host

Rabbit

### Reactivity

Human, Mouse, Rat

### Conjugation

Unconjugated

### Tested

ELISA, IF, IHC-P, WB

### Applications

### Immunogen

ATG9A antibody was raised against an 18 amino acid synthetic peptide near the carboxy terminus of human ATG9A. The immunogen is located within amino acids 720 - 770 of ATG9A.

### Target

ATG9A

### Preservatives

ATG9A Antibody is supplied in PBS containing 0.02% sodium azide.

### Form/Appearance

Liquid

### Concentration

1 mg/mL

### Storage

ATG9A antibody can be stored at 4°C for three months and -20°C, stable for up to one year. As with all antibodies care should be taken to avoid repeated freeze thaw cycles. Antibodies should not be exposed to prolonged high temperatures.

### Note

For research use only

### Application notes

ATG9A antibody can be used for detection of ATG9A by Western blot at 1 µg/mL. Antibody can also be used for immunohistochemistry starting at 5 µg/mL. For immunofluorescence start at 20 µg/mL. Antibody validated: Western Blot in mouse samples; Immunohistochemistry in human samples and Immunofluorescence in human samples. All other applications and species not yet tested.

### Isotype

IgG

### Clonality

Polyclonal

### Uniprot ID

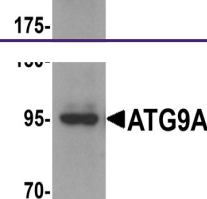
[Q7Z3C6](#)

### NCBI

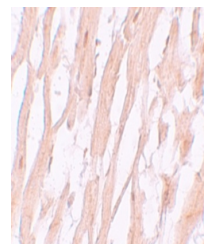
[NP\\_076990](#)

### Dilution Range

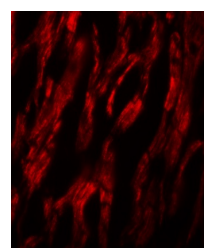
ATG9A antibody can be used for detection of ATG9A by Western blot at 1 µg/mL. Antibody can also be used for immunohistochemistry starting at 5 µg/mL. For immunofluorescence start at 20 µg/mL. Antibody validated: Western Blot in mouse samples; Immunohistochemistry in human samples and



Western blot analysis of ATG9A in mouse ...



Immunohistochemistry of ATG9A in human h...



Immunofluorescence of ATG9A in human hea...