

Product Datasheet

ATP11A Antibody (orb1240172)

Description

ATP11A Antibody

Species/Host

Rabbit

Reactivity

Human, Mouse, Rat

Conjugation

Unconjugated

Tested

ELISA, ICC, IF, WB

Applications

Immunogen

ATP11A antibody was raised against a 19 amino acid synthetic peptide near the amino terminus of human ATP11A. The immunogen is located within the first 50 amino acids of ATP11A.

Target

ATP11A

Preservatives

ATP11A Antibody is supplied in PBS containing 0.02% sodium azide.

Form/Appearance

Liquid

Concentration

1 mg/mL

Storage

ATP11A antibody can be stored at 4°C for three months and -20°C, stable for up to one year. As with all antibodies care should be taken to avoid repeated freeze thaw cycles. Antibodies should not be exposed to prolonged high temperatures.

Note

For research use only

Application notes

ATP11A antibody can be used for detection of ATP11A by Western blot at 1 µg/mL. Antibody can also be used for immunocytochemistry starting at 10 µg/mL. For immunofluorescence start at 20 µg/mL. Antibody validated: Western Blot in human samples; Immunocytochemistry in human samples and Immunofluorescence in human samples. All other applications and species not yet tested.

Isotype

IgG

Clonality

Polyclonal

Uniprot ID

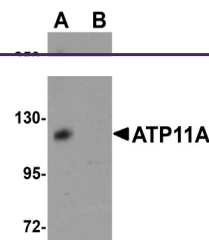
P98196

NCBI

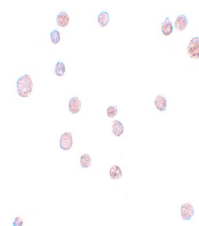
NP_115565

Dilution Range

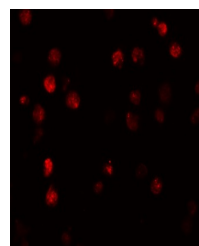
ATP11A antibody can be used for detection of ATP11A by Western blot at 1 µg/mL. Antibody can also be used for immunocytochemistry starting at 10 µg/mL. For immunofluorescence start at 20 µg/mL. Antibody validated: Western Blot in human samples; Immunocytochemistry in human samples



Western blot analysis of ATP11A in K562 ...



Immunocytochemistry of ATP11A in K562 ce...



Immunofluorescence of ATP11A in K562 cel...