

Product Datasheet

AXIN1 Antibody (orb1240160)

Description

AXIN1 Antibody

Species/Host

Rabbit

Reactivity

Human, Mouse, Rat

Conjugation

Unconjugated

Tested

ELISA, IF, WB

Applications

Immunogen

AXIN1 antibody was raised against a 14 amino acid synthetic peptide near the carboxy terminus of human AXIN1. The immunogen is located within amino acids 620 - 670 of AXIN1.

Target

AXIN1

Preservatives

AXIN1 Antibody is supplied in PBS containing 0.02% sodium azide.

Form/Appearance

Liquid

Concentration

1 mg/mL

Storage

AXIN1 antibody can be stored at 4°C for three months and -20°C, stable for up to one year. As with all antibodies care should be taken to avoid repeated freeze thaw cycles. Antibodies should not be exposed to prolonged high temperatures.

Note

For research use only

Application notes

AXIN1 antibody can be used for detection of AXIN1 by Western blot at 1 - 2 µg/mL. Antibody can also be used for immunofluorescence starting at 20 µg/mL. For immunofluorescence start at 20 µg/mL. Antibody validated: Western Blot in human samples and Immunofluorescence in human samples. All other applications and species not yet tested.

Isotype

IgG

Clonality

Polyclonal

Uniprot ID

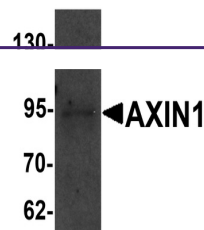
[O15169](#)

NCBI

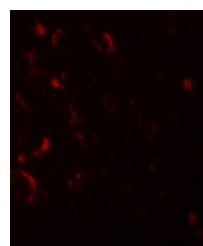
[AAC51624](#)

Dilution Range

AXIN1 antibody can be used for detection of AXIN1 by Western blot at 1 - 2 µg/mL. Antibody can also be used for immunofluorescence starting at 20 µg/mL. For immunofluorescence start at 20 µg/mL. Antibody validated: Western Blot in human samples and Immunofluorescence in human samples. All other applications and species not yet tested.



Western blot analysis of AXIN1 in SK-N-S...



Immunofluorescence of AXIN1 in human brain...