

## Product Datasheet

### BACE2 Antibody (orb1240151)

## Description

BACE2 Antibody

### Species/Host

Rabbit

### Reactivity

Human, Mouse, Rat

### Conjugation

Unconjugated

### Tested

ELISA, IHC-P, WB

### Applications

### Immunogen

BACE2 antibody was raised against a 16 amino acid peptide near the amino terminus of human BACE2. The immunogen is located within amino acids 30 - 80 of BACE2.

### Target

BACE2

### Preservatives

BACE2 Antibody is supplied in PBS containing 0.02% sodium azide.

### Form/Appearance

Liquid

### Concentration

1 mg/mL

### Storage

BACE2 antibody can be stored at 4°C for three months and -20°C, stable for up to one year. As with all antibodies care should be taken to avoid repeated freeze thaw cycles. Antibodies should not be exposed to prolonged high temperatures.

### Note

For research use only

### Application notes

BACE2 can be used for detection of BACE2 by Western blot at 1 µg/mL. Antibody can also be used for immunohistochemistry starting at 10 µg/mL. Antibody validated: Western Blot in human and mouse samples and Immunohistochemistry in mouse samples. All other applications and species not yet tested.

### Isotype

IgG

### Clonality

Polyclonal

### MW

Predicted: 57 kDa Observed: 66 kDa

### Uniprot ID

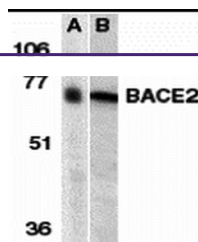
[Q9Y5Z0](#)

### NCBI

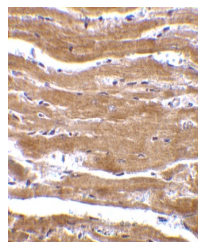
[AAF17078](#)

### Dilution Range

BACE2 can be used for detection of BACE2 by Western blot at 1 µg/mL. Antibody can also be used for immunohistochemistry starting at 10 µg/mL. Antibody validated: Western Blot in human and mouse samples and Immunohistochemistry in mouse samples. All other applications and species not yet tested.



Western blot analysis of BACE2 in (A) hu...



Immunohistochemistry of BACE2 in mouse h...