

Product Datasheet

BAG1 Antibody (orb1240145)

Description
BAG1 Antibody
Species/Host

Rabbit

Reactivity

Human, Mouse, Rat

Conjugation

Unconjugated

Tested

ELISA, IF, IHC-P, WB

Applications
Immunogen

BAG-1 antibody was raised against a 14 amino acid synthetic peptide from near the carboxy terminus of human BAG-1. The immunogen is located within the last 50 amino acids of BAG-1.

Target

BAG1

Preservatives

BAG-1 Antibody is supplied in PBS containing 0.02% sodium azide.

Form/Appearance

Liquid

Concentration

1 mg/mL

Storage

BAG-1 antibody can be stored at 4°C for three months and -20°C, stable for up to one year. As with all antibodies care should be taken to avoid repeated freeze thaw cycles. Antibodies should not be exposed to prolonged high temperatures.

Note

For research use only

Application notes

BAG-1 antibody can be used for the detection of BAG-1 by Western blot at 1 - 2 µg/mL. Antibody can also be used for immunohistochemistry starting at 5 µg/mL. For immunofluorescence start at 20 µg/mL. Antibody validated: Western Blot in human samples; Immunohistochemistry in mouse samples and Immunofluorescence in mouse samples. All other applications and species not yet tested.

Isotype

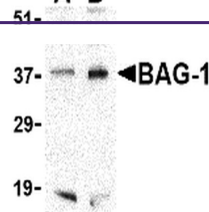
IgG

Clonality

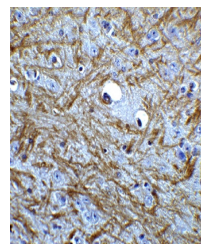
Polyclonal

Uniprot ID
Q99933
NCBI
NP_004314
Dilution Range

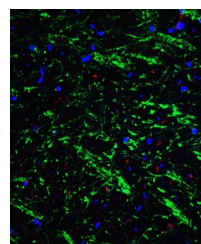
BAG-1 antibody can be used for the detection of BAG-1 by Western blot at 1 - 2 µg/mL. Antibody can also be used for immunohistochemistry starting at 5 µg/mL. For immunofluorescence start at 20 µg/mL. Antibody validated: Western Blot in human samples; Immunohistochemistry in mouse samples

A B


Western blot analysis of BAG-1 in PC-3 c...



Immunohistochemistry of BAG 1 in mouse b...



Immunofluorescence of BAG 1 in mouse bra...