

## Product Datasheet

### BAG1 Antibody (orb1240144)

## Description

## BAG1 Antibody

### Species/Host

Rabbit

### Reactivity

Human, Mouse, Rat

### Conjugation

Unconjugated

### Tested

ELISA, IF, IHC-P, WB

### Applications

### Immunogen

BAG-1 antibody was raised against a 14 amino acid synthetic peptide from near the amino terminus of human BAG-1. The immunogen is located within the first 50 amino acids of BAG-1.

### Target

BAG1

### Preservatives

BAG-1 Antibody is supplied in PBS containing 0.02% sodium azide.

### Form/Appearance

Liquid

### Concentration

1 mg/mL

### Storage

BAG-1 antibody can be stored at 4°C for three months and -20°C, stable for up to one year. As with all antibodies care should be taken to avoid repeated freeze thaw cycles. Antibodies should not be exposed to prolonged high temperatures.

### Note

For research use only

### Application notes

BAG-1 antibody can be used for the detection of BAG-1 by Western blot at 1 - 2 µg/mL. Antibody can also be used for immunohistochemistry starting at 2 µg/mL. For immunofluorescence start at 20 µg/mL. Antibody validated: Western Blot in human samples; Immunohistochemistry in human samples and Immunofluorescence in human samples. All other applications and species not yet tested.

### Isotype

IgG

### Clonality

Polyclonal

### Uniprot ID

[Q99933](#)

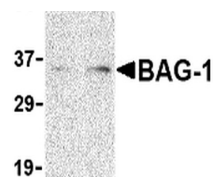
### NCBI

[NP\\_004314](#)

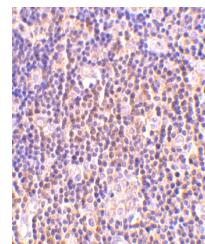
### Dilution Range

BAG-1 antibody can be used for the detection of BAG-1 by Western blot at 1 - 2 µg/mL. Antibody can also be used for immunohistochemistry starting at 2 µg/mL. For immunofluorescence start at 20 µg/mL. Antibody validated: Western Blot in human samples; Immunohistochemistry in human samples

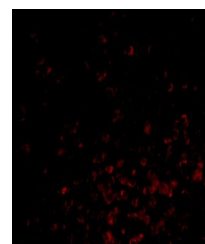
A B



Western blot analysis of BAG-1 in PC-3 c...



Immunohistochemistry of BAG-1 in human l...



Immunofluorescence of BAG-1 in Human Lym...