

## Product Datasheet

### NKX3-2 Antibody (orb1240133)

## Description

NKX3-2 Antibody

### Species/Host

Rabbit

### Reactivity

Human, Mouse, Rat

### Conjugation

Unconjugated

### Tested

ELISA, IF, IHC-P, WB

### Applications

### Immunogen

BAPX1 antibody was raised against a 19 amino acid synthetic peptide near the center of human BAPX1. The immunogen is located within amino acids 180 - 230 of BAPX1.

### Target

NKX3-2

### Preservatives

BAPX1 Antibody is supplied in PBS containing 0.02% sodium azide.

### Form/Appearance

Liquid

### Concentration

1 mg/mL

### Storage

BAPX1 antibody can be stored at 4°C for three months and -20°C, stable for up to one year. As with all antibodies care should be taken to avoid repeated freeze thaw cycles. Antibodies should not be exposed to prolonged high temperatures.

### Note

For research use only

### Application notes

BAPX1 antibody can be used for detection of BAPX1 by Western blot at 1 and 2 µg/mL. Antibody can also be used for immunohistochemistry starting at 5 µg/mL. For immunofluorescence start at 20 µg/mL. Antibody validated: Western Blot in human samples; Immunohistochemistry in mouse samples and Immunofluorescence in mouse samples. All other applications and species not yet tested.

### Isotype

IgG

### Clonality

Polyclonal

### Uniprot ID

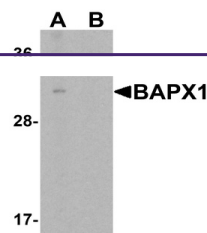
**P78367**

### NCBI

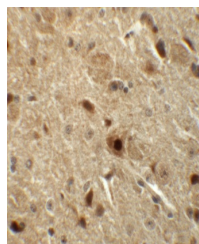
**NP\_001180**

### Dilution Range

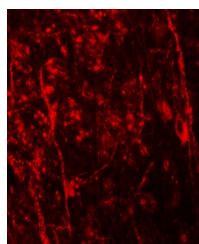
BAPX1 antibody can be used for detection of BAPX1 by Western blot at 1 and 2 µg/mL. Antibody can also be used for immunohistochemistry starting at 5 µg/mL. For immunofluorescence start at 20 µg/mL. Antibody validated: Western Blot in human samples; Immunohistochemistry in mouse samples



Western blot analysis of BAPX1 in human ...



Immunohistochemistry of BAPX1 in mouse b...



Immunofluorescence of BAPX1 in mouse bra...