

## Product Datasheet

### PTRH2 Antibody (orb1240101)

**Description**

PTRH2 Antibody

**Species/Host**

Rabbit

**Reactivity**

Human, Mouse, Rat

**Conjugation**

Unconjugated

**Tested**

ELISA, ICC, IF, WB

**Applications**
**Immunogen**

Bit1 antibody was raised against a 15 amino acid synthetic peptide from near the amino-terminus of human Bit1. The immunogen is located within amino acids 20 - 70 of Bit1.

**Target**

PTRH2

**Preservatives**

Bit1 Antibody is supplied in PBS containing 0.02% sodium azide.

**Form/Appearance**

Liquid

**Concentration**

1 mg/mL

**Storage**

Bit1 antibody can be stored at 4°C for three months and -20°C, stable for up to one year. As with all antibodies care should be taken to avoid repeated freeze thaw cycles. Antibodies should not be exposed to prolonged high temperatures.

**Note**

For research use only

**Application notes**

Bit1 antibody can be used for the detection of Bit1 by Western blot at 1 - 4 µg/mL. Antibody can also be used for immunocytochemistry starting at 2 µg/mL. For immunofluorescence start at 20 µg/mL. Antibody validated: Western Blot in mouse samples; Immunocytochemistry in mouse samples and Immunofluorescence in mouse samples. All other applications and species not yet tested.

**Isotype**

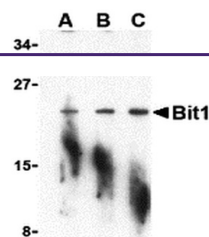
IgG

**Clonality**

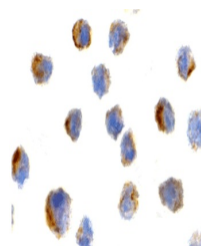
Polyclonal

**Uniprot ID**
**Q9Y3E5**
**NCBI**
**NP\_057161**
**Dilution Range**

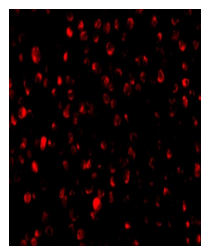
Bit1 antibody can be used for the detection of Bit1 by Western blot at 1 - 4 µg/mL. Antibody can also be used for immunocytochemistry starting at 2 µg/mL. For immunofluorescence start at 20 µg/mL. Antibody validated: Western Blot in mouse samples; Immunocytochemistry in mouse samples and



Western blot analysis of Bit1 in A-20 cells...



Immunocytochemistry of Bit1 in 3T3 cells...



Immunofluorescence of Bit1 in 3T3 cells ...