

Product Datasheet

PTRH2 Antibody (orb1240100)

Description

PTRH2 Antibody

Species/Host

Rabbit

Reactivity

Human, Mouse

Conjugation

Unconjugated

Tested

ELISA, IF, IHC-P, WB

Applications

Immunogen

Bit1 antibody was raised against a 16 amino acid synthetic peptide from near the center of human Bit1. The immunogen is located within amino acids 80 - 130 of Bit1.

Target

PTRH2

Preservatives

Bit1 Antibody is supplied in PBS containing 0.02% sodium azide.

Form/Appearance

Liquid

Concentration

1 mg/mL

Storage

Bit1 antibody can be stored at 4°C for three months and -20°C, stable for up to one year. As with all antibodies care should be taken to avoid repeated freeze thaw cycles. Antibodies should not be exposed to prolonged high temperatures.

Note

For research use only

Application notes

Bit1 antibody can be used for the detection of Bit1 by Western blot at 1 - 4 µg/mL. Antibody can also be used for immunohistochemistry starting at 10 µg/mL. For immunofluorescence start at 20 µg/mL. Antibody validated: Western Blot in human samples; Immunohistochemistry in human samples and Immunofluorescence in human samples. All other applications and species not yet tested.

Isotype

IgG

Clonality

Polyclonal

Uniprot ID

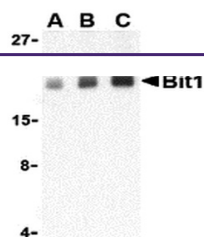
[Q9Y3E5](#)

NCBI

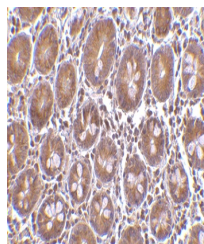
[NP_057161](#)

Dilution Range

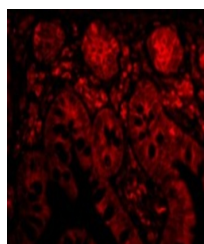
Bit1 antibody can be used for the detection of Bit1 by Western blot at 1 - 4 µg/mL. Antibody can also be used for immunohistochemistry starting at 10 µg/mL. For immunofluorescence start at 20 µg/mL. Antibody validated: Western Blot in human samples; Immunohistochemistry in human samples and



Western blot analysis of Bit1 in Daudi c...



Immunohistochemistry of Bit1 in human sm...



Immunofluorescence of Bit1 in Human Smal...