

Product Datasheet

BMF Antibody (orb1240097)

Description

BMF Antibody

Species/Host

Rabbit

Reactivity

Human, Mouse

Conjugation

Unconjugated

Tested

ELISA, ICC, WB

Applications

Immunogen

Bmf antibody was raised with a synthetic peptide corresponding to 15 amino acids near the amino terminus of human Bmf. The immunogen is located within the first 50 amino acids of Bmf.

Target

BMF

Preservatives

Bmf Antibody is supplied in PBS containing 0.02% sodium azide.

Form/Appearance

Liquid

Concentration

1 mg/mL

Storage

Bmf antibody can be stored at 4°C for three months and -20°C, stable for up to one year. As with all antibodies care should be taken to avoid repeated freeze thaw cycles. Antibodies should not be exposed to prolonged high temperatures.

Note

For research use only

Application notes

Bmf antibody can be used for detection of Bmf by Western blot at 1 - 2 µg/mL. Antibody can also be used for immunocytochemistry starting at 10 µg/mL. For immunofluorescence start at 5 µg/mL. Antibody validated: Western Blot in human samples; Immunocytochemistry in human samples and Immunofluorescence in human samples. All other applications and species not yet tested.

Isotype

IgG

Clonality

Polyclonal

MW

Predicted: 20 kDa Observed: 22 kDa

Uniprot ID

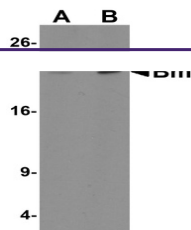
[Q96LC9](#)

NCBI

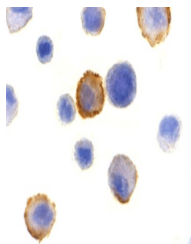
[NP_277038](#)

Dilution Range

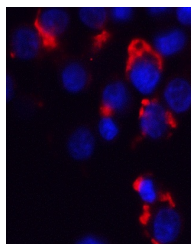
Bmf antibody can be used for detection of Bmf by Western blot at 1 - 2 µg/mL. Antibody can also be used for immunocytochemistry starting at 10 µg/mL. For immunofluorescence start at 5 µg/mL. Antibody validated: Western Blot in human samples;



Western blot analysis of Bmf in 293 cells...



Immunocytochemistry of Bmf in HeLa cells...



Immunofluorescence of Bmf in HeLa cells ...