

Product Datasheet

BORA Antibody (orb1240091)

Description

BORA Antibody

Species/Host

Rabbit

Reactivity

Human, Mouse, Rat

Conjugation

Unconjugated

Tested

ELISA, IF, IHC-P, WB

Applications

Immunogen

Bora antibody was raised against a 15 amino acid synthetic peptide from near the carboxy terminus of human Bora. The immunogen is located within amino acids 410 - 460 of Bora.

Target

BORA

Preservatives

Bora Antibody is supplied in PBS containing 0.02% sodium azide.

Form/Appearance

Liquid

Concentration

1 mg/mL

Storage

Bora antibody can be stored at 4°C for three months and -20°C, stable for up to one year. As with all antibodies care should be taken to avoid repeated freeze thaw cycles. Antibodies should not be exposed to prolonged high temperatures.

Note

For research use only

Application notes

Bora antibody can be used for detection of Bora by Western blot at 1-2 µg/mL. Antibody can also be used for immunohistochemistry starting at 2.5 µg/mL. For immunofluorescence start at 20 µg/mL. Antibody validated: Western Blot in mouse samples; Immunohistochemistry in mouse samples and Immunofluorescence in mouse samples. All other applications and species not yet tested.

Isotype

IgG

Clonality

Polyclonal

Uniprot ID

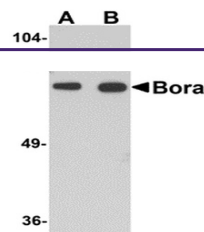
[Q6PGQ7](#)

NCBI

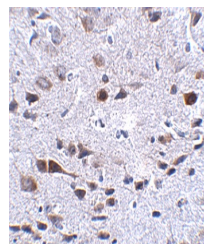
[Q6PGQ7](#)

Dilution Range

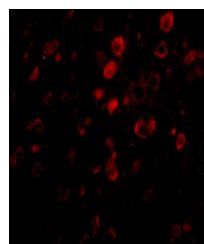
Bora antibody can be used for detection of Bora by Western blot at 1-2 µg/mL. Antibody can also be used for immunohistochemistry starting at 2.5 µg/mL. For immunofluorescence start at 20 µg/mL. Antibody validated: Western Blot in mouse samples; Immunohistochemistry in mouse samples



Western blot analysis of Bora in mouse brain tissue.



Immunohistochemistry of Bora in mouse brain tissue.



Immunofluorescence of Bora in Mouse Brain tissue.