

Product Datasheet

BRCC3 Antibody (orb1240086)

Description

BRCC3 Antibody

Species/Host

Rabbit

Reactivity

Human, Mouse, Rat

Conjugation

Unconjugated

Tested

ELISA, IF, IHC-P, WB

Applications

Immunogen

BRCC36 antibody was raised against a 18 amino acid synthetic peptide from near the amino terminus of human BRCC36. The immunogen is located within amino acids 20 - 70 of BRCC36.

Target

BRCC3

Preservatives

BRCC36 Antibody is supplied in PBS containing 0.02% sodium azide.

Form/Appearance

Liquid

Concentration

1 mg/mL

Storage

BRCC36 antibody can be stored at 4°C for three months and -20°C, stable for up to one year. As with all antibodies care should be taken to avoid repeated freeze thaw cycles. Antibodies should not be exposed to prolonged high temperatures.

Note

For research use only

Application notes

BRCC36 antibody can be used for detection of BRCC36 by Western blot at 0.5 - 2 µg/mL. Antibody can also be used for immunohistochemistry starting at 2.5 µg/mL. For immunofluorescence start at 20 µg/mL. Antibody validated: Western Blot in human samples; Immunohistochemistry in human samples and Immunofluorescence in human samples. All other applications and species not yet tested.

Isotype

IgG

Clonality

Polyclonal

MW

Predicted: 35 kDa Observed: 35 kDa

Uniprot ID

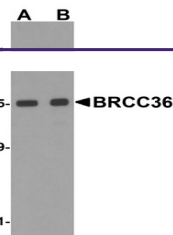
[P46736](#)

NCBI

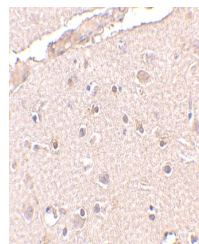
[NP_077308](#)

Dilution Range

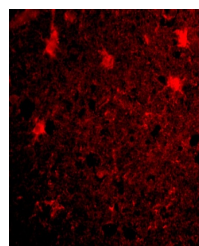
BRCC36 antibody can be used for detection of BRCC36 by Western blot at 0.5 - 2 µg/mL. Antibody can also be used for immunohistochemistry starting at 2.5 µg/mL. For immunofluorescence start at 20 µg/mL. Antibody validated: Western Blot in human



Western blot analysis of BRCC36 in MCF7 ...



Immunohistochemistry of BRCC36 in human ...



Immunofluorescence of BRCC36 in Human Br...