

Product Datasheet

CABP7 Antibody (orb1240076)

Description

CABP7 Antibody

Species/Host

Rabbit

Reactivity

Human, Mouse, Rat

Conjugation

Unconjugated

Tested

ELISA, ICC, IF, WB

Applications

Immunogen

CaBP7 antibody was raised against a 15 amino acid synthetic peptide near the amino terminus of human CaBP7. The immunogen is located within the first 50 amino acids of CaBP7.

Target

CABP7

Preservatives

CaBP7 Antibody is supplied in PBS containing 0.02% sodium azide.

Form/Appearance

Liquid

Concentration

1 mg/mL

Storage

CaBP7 antibody can be stored at 4°C for three months and -20°C, stable for up to one year. As with all antibodies care should be taken to avoid repeated freeze thaw cycles. Antibodies should not be exposed to prolonged high temperatures.

Note

For research use only

Application notes

CaBP7 antibody can be used for detection of CaBP7 by Western blot at 1 - 2 µg/mL. Antibody can also be used for immunocytochemistry starting at 4 µg/mL. For immunofluorescence start at 20 µg/mL. Antibody validated: Western Blot in human samples; Immunocytochemistry in human samples and Immunofluorescence in human samples. All other applications and species not yet tested.

Isotype

IgG

Clonality

Polyclonal

Uniprot ID

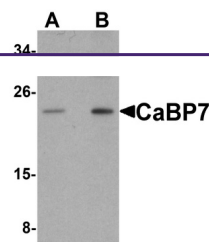
[Q86V35](#)

NCBI

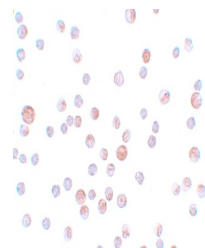
[NP_872333](#)

Dilution Range

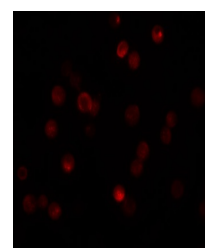
CaBP7 antibody can be used for detection of CaBP7 by Western blot at 1 - 2 µg/mL. Antibody can also be used for immunocytochemistry starting at 4 µg/mL. For immunofluorescence start at 20 µg/mL. Antibody validated: Western Blot in human samples; Immunocytochemistry in human samples and



Western blot analysis of CaBP7 in HeLa c...



Immunocytochemistry of CaBP7 in HeLa cel...



Immunofluorescence of CaBP7 in HeLa cell...