

Product Datasheet

CAPN6 Antibody (orb1240070)

Description

CAPN6 Antibody

Species/Host

Rabbit

Reactivity

Human, Mouse, Rat

Conjugation

Unconjugated

Tested

ELISA, IF, IHC-P, WB

Applications

Immunogen

CAPN6 antibody was raised against a 18 amino acid synthetic peptide from near the carboxy terminus of human CAPN6. The immunogen is located within the last 50 amino acids of CAPN6.

Target

CAPN6

Preservatives

CAPN6 Antibody is supplied in PBS containing 0.02% sodium azide.

Form/Appearance

Liquid

Concentration

1 mg/mL

Storage

CAPN6 antibody can be stored at 4°C for three months and -20°C, stable for up to one year. As with all antibodies care should be taken to avoid repeated freeze thaw cycles. Antibodies should not be exposed to prolonged high temperatures.

Note

For research use only

Application notes

CAPN6 antibody can be used for the detection of StrepII by Western blot at 0.5 - 1 µg/mL. Antibody can also be used for immunohistochemistry starting at 2.5 µg/mL. For immunofluorescence start at 20 µg/mL. Antibody validated: Western Blot in rat samples; Immunohistochemistry in human samples and Immunofluorescence in human samples. All other applications and species not yet tested.

Isotype

IgG

Clonality

Polyclonal

Uniprot ID

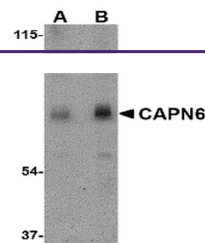
[Q9Y6Q1](#)

NCBI

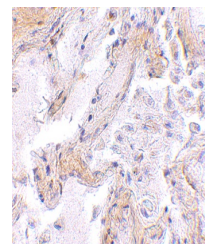
[NP_055104](#)

Dilution Range

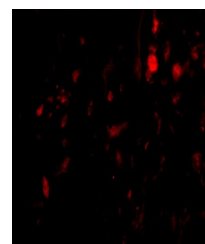
CAPN6 antibody can be used for the detection of StrepII by Western blot at 0.5 - 1 µg/mL. Antibody can also be used for immunohistochemistry starting at 2.5 µg/mL. For immunofluorescence start at 20 µg/mL. Antibody validated: Western Blot in rat samples; Immunohistochemistry in human samples



Western blot analysis of CAPN6 in rat lung tissue.



Immunohistochemistry of CAPN6 in human lung tissue.



Immunofluorescence of CAPN6 in Human Lung tissue.