

Product Datasheet

CADPS Antibody (orb1240068)

Description

CADPS Antibody

Species/Host

Rabbit

Reactivity

Human, Mouse, Rat

Conjugation

Unconjugated

Tested

ELISA, IF, IHC-P, WB

Applications

Immunogen

CAPS1 antibody was raised against a 21 amino acid synthetic peptide near the amino terminus of the human CAPS1. The immunogen is located within amino acids 90 - 140 of CAPS1.

Target

CADPS

Preservatives

CAPS1 Antibody is supplied in PBS containing 0.02% sodium azide.

Form/Appearance

Liquid

Concentration

1 mg/mL

Storage

CAPS1 antibody can be stored at 4°C for three months and -20°C, stable for up to one year. As with all antibodies care should be taken to avoid repeated freeze thaw cycles. Antibodies should not be exposed to prolonged high temperatures.

Note

For research use only

Application notes

CAPS1 antibody can be used for detection of CAPS1 by Western blot at 0.25 - 0.5 µg/mL. Antibody can also be used for immunohistochemistry starting at 5 µg/mL. For immunofluorescence start at 20 µg/mL. Antibody validated: Western Blot in rat samples; Immunohistochemistry in human samples and Immunofluorescence in human samples. All other applications and species not yet tested.

Isotype

IgG

Clonality

Polyclonal

Uniprot ID

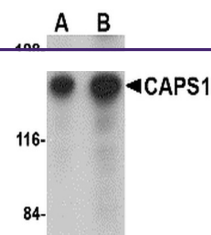
[Q9ULU8](#)

NCBI

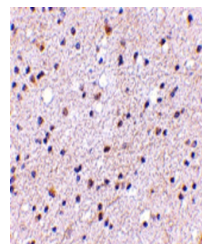
[NP_899631](#)

Dilution Range

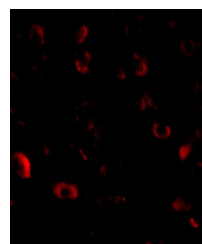
CAPS1 antibody can be used for detection of CAPS1 by Western blot at 0.25 - 0.5 µg/mL. Antibody can also be used for immunohistochemistry starting at 5 µg/mL. For immunofluorescence start at 20 µg/mL. Antibody validated: Western Blot in rat samples; Immunohistochemistry in human samples



Western blot analysis of CAPS1 in rat br...



Immunohistochemistry of CAPS1 in human b...



Immunofluorescence of CAPS1 in human bra...