

Product Datasheet

CADPS2 Antibody (orb1240067)

Description

CADPS2 Antibody

Species/Host

Rabbit

Reactivity

Human, Mouse, Rat

Conjugation

Unconjugated

Tested

ELISA, IF, IHC-P, WB

Applications

Immunogen

CAPS2 antibody was raised against a 19 amino acid synthetic peptide near the center of the human CAPS2. The immunogen is located within amino acids 510 - 560 of CAPS2.

Target

CADPS2

Preservatives

CAPS2 Antibody is supplied in PBS containing 0.02% sodium azide.

Form/Appearance

Liquid

Concentration

1 mg/mL

Storage

CAPS2 antibody can be stored at 4°C for three months and -20°C, stable for up to one year. As with all antibodies care should be taken to avoid repeated freeze thaw cycles. Antibodies should not be exposed to prolonged high temperatures.

Note

For research use only

Application notes

CAPS2 antibody can be used for detection of CAPS2 by Western blot at 0.5 - 1 µg/mL. Antibody can also be used for immunohistochemistry starting at 5 µg/mL. For immunofluorescence start at 20 µg/mL. Antibody validated: Western Blot in human samples; Immunohistochemistry in human samples and Immunofluorescence in human samples. All other applications and species not yet tested.

Isotype

IgG

Clonality

Polyclonal

MW

Predicted: 138, 145 kDa Observed: 150 kDa

Uniprot ID

[Q86UW7](#)

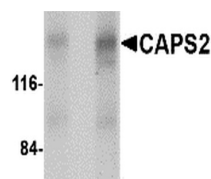
NCBI

[NP_060424](#)

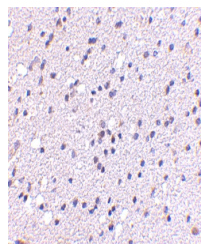
Dilution Range

CAPS2 antibody can be used for detection of CAPS2 by Western blot at 0.5 - 1 µg/mL. Antibody can also be used for immunohistochemistry starting at 5 µg/mL. For immunofluorescence start at 20 µg/mL. Antibody validated: Western Blot in human

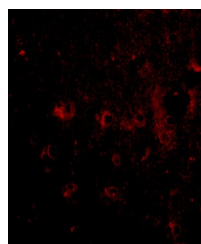
A B



Western blot analysis of CAPS2 in human ...



Immunohistochemistry of CAPS2 in human b...



Immunofluorescence of CAPS2 in Human Bra...