

## Product Datasheet

### CASR Antibody (orb1240036)

## Description

CASR Antibody

### Species/Host

Rabbit

### Reactivity

Human, Mouse, Rat

### Conjugation

Unconjugated

### Tested Applications

ELISA, IF, IHC-P, WB

### Immunogen

CASR antibody was raised against a 15 amino acid peptide near the amino terminus of human CASR. The immunogen is located within the first 50 amino acids of CASR.

### Target

CASR

### Preservatives

CASR Antibody is supplied in PBS containing 0.02% sodium azide.

### Form/Appearance

Liquid

### Concentration

1 mg/mL

### Storage

CASR antibody can be stored at 4°C for three months and -20°C, stable for up to one year.

### Note

For research use only

### Application notes

CASR antibody can be used for detection of CASR by Western blot at 1 - 2 µg/ml. Antibody can also be used for Immunohistochemistry at 5 µg/mL. For Immunofluorescence start at 20 µg/mL. Antibody validated: Western Blot in mouse samples; Immunohistochemistry in human samples and Immunofluorescence in human samples. All other applications and species not yet tested.

### Isotype

IgG

### Clonality

Polyclonal

### MW

Predicted: 101, 120 kDa Observed: 115, 125 kDa

### Uniprot ID

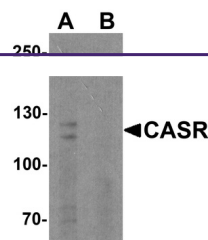
[P41180](#)

### NCBI

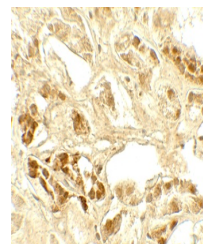
[NP\\_001171536](#)

### Dilution Range

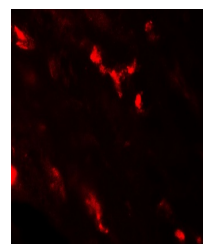
CASR antibody can be used for detection of CASR by Western blot at 1 - 2 µg/ml. Antibody can also be used for Immunohistochemistry at 5 µg/mL. For Immunofluorescence start at 20 µg/mL. Antibody validated: Western Blot in mouse samples; Immunohistochemistry in human samples and Immunofluorescence in human samples. All other applications and species not yet tested.



Western blot analysis of CASR in EL4 cells



Immunohistochemistry of CASR in human kidney



Immunofluorescence of CASR in human kidney