

Product Datasheet

CCDC106 Antibody (orb1240031)

Description

CCDC106 Antibody

Species/Host

Rabbit

Reactivity

Human, Mouse, Rat

Conjugation

Unconjugated

Tested

ELISA, IF, IHC-P, WB

Applications

Immunogen

CCDC106 antibody was raised against a 15 amino acid synthetic peptide near the carboxy terminus of human CCDC106. The immunogen is located within the last 50 amino acids of CCDC106.

Target

CCDC106

Preservatives

CCDC106 Antibody is supplied in PBS containing 0.02% sodium azide.

Form/Appearance

Liquid

Concentration

1 mg/mL

Storage

CCDC106 antibody can be stored at 4°C for three months and -20°C, stable for up to one year. As with all antibodies care should be taken to avoid repeated freeze thaw cycles. Antibodies should not be exposed to prolonged high temperatures.

Note

For research use only

Application notes

CCDC106 antibody can be used for detection of CCDC106 by Western blot at 0.5 - 1 µg/mL. Antibody can also be used for immunohistochemistry starting at 5 µg/mL. For immunofluorescence start at 20 µg/mL. Antibody validated: Western Blot in human samples; Immunohistochemistry in rat samples and Immunofluorescence in rat samples. All other applications and species not yet tested.

Isotype

IgG

Clonality

Polyclonal

Uniprot ID

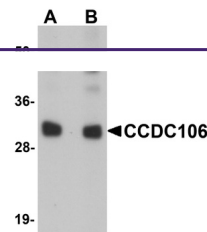
Q9BWC9

NCBI

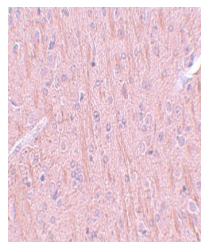
NP_037433

Dilution Range

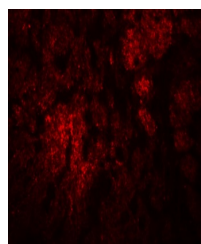
CCDC106 antibody can be used for detection of CCDC106 by Western blot at 0.5 - 1 µg/mL. Antibody can also be used for immunohistochemistry starting at 5 µg/mL. For immunofluorescence start at 20 µg/mL. Antibody



Western blot analysis of CCDC106 in huma...



Immunohistochemistry of CCDC106 in rat b...



Immunofluorescence of CCDC106 in rat bra...