

Product Datasheet

CCDC22 Antibody (orb1240028)

Description

CCDC22 Antibody

Species/Host

Rabbit

Reactivity

Human, Mouse, Rat

Conjugation

Unconjugated

Tested

ELISA, IF, WB

Applications

Immunogen

CCDC22 antibody was raised against an 18 amino acid synthetic peptide near the amino terminus of human CCDC22. The immunogen is located within amino acids 530 - 580 of CCDC22.

Target

CCDC22

Preservatives

CCDC22 Antibody is supplied in PBS containing 0.02% sodium azide.

Form/Appearance

Liquid

Concentration

1 mg/mL

Storage

CCDC22 antibody can be stored at 4°C for three months and -20°C, stable for up to one year. As with all antibodies care should be taken to avoid repeated freeze thaw cycles. Antibodies should not be exposed to prolonged high temperatures.

Note

For research use only

Application notes

CCDC22 antibody can be used for detection of CCDC22 by Western blot at 1 - 2 µg/mL. For immunofluorescence start at 20 µg/mL. Antibody validated: Western Blot in human samples and Immunofluorescence in human samples. All other applications and species not yet tested.

Isotype

IgG

Clonality

Polyclonal

Uniprot ID

[O60826](#)

NCBI

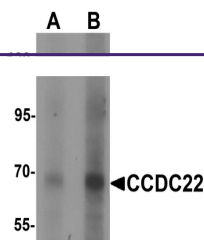
[NP_054727](#)

Dilution Range

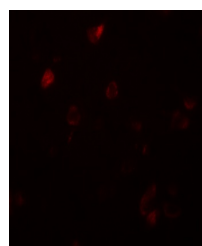
CCDC22 antibody can be used for detection of CCDC22 by Western blot at 1 - 2 µg/mL. For immunofluorescence start at 20 µg/mL. Antibody validated: Western Blot in human samples and Immunofluorescence in human samples. All other applications and species not yet tested.

Expiration Date

12 months from date of receipt.



Western blot analysis of CCDC22 in 293 c...



Immunofluorescence of CCDC22 in human br...