

## Product Datasheet

### NSRP1 Antibody (orb1240025)

## Description

## NSRP1 Antibody

### Species/Host

Gallus

### Reactivity

Human, Mouse, Rat

### Conjugation

Unconjugated

### Tested

ELISA, IF, WB

### Applications

### Immunogen

CCDC55 antibody was raised against a 16 amino acid synthetic peptide near the carboxy terminus of human CCDC55. The immunogen is located within amino acids 430 - 480 of CCDC55.

### Target

NSRP1

### Preservatives

CCDC55 Antibody is supplied in PBS containing 0.02% sodium azide.

### Form/Appearance

Liquid

### Concentration

1 mg/mL

### Storage

CCDC55 antibody can be stored at 4°C for three months and -20°C, stable for up to one year. As with all antibodies care should be taken to avoid repeated freeze thaw cycles. Antibodies should not be exposed to prolonged high temperatures.

### Note

For research use only

### Application notes

CCDC55 antibody can be used for detection of CCDC55 by Western blot at 0.5 - 1 µg/mL. Antibody can also be used for immunofluorescence starting at 20 µg/mL. For immunofluorescence start at 20 µg/mL. Antibody validated: Western Blot in human samples and Immunofluorescence in mouse samples. All other applications and species not yet tested.

### Isotype

IgY

### Clonality

Polyclonal

### Uniprot ID

[Q9H0G5](#)

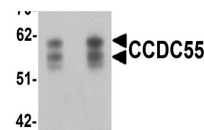
### NCBI

[NP\\_115517](#)

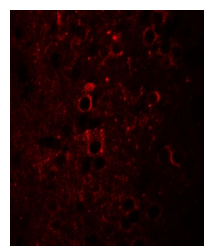
### Dilution Range

CCDC55 antibody can be used for detection of CCDC55 by Western blot at 0.5 - 1 µg/mL. Antibody can also be used for immunofluorescence starting at 20 µg/mL. For immunofluorescence start at 20 µg/mL. Antibody validated: Western Blot in human samples and Immunofluorescence in mouse samples. All other applications and species not yet tested.

A B



Western blot analysis of CCDC55 in human...



Immunofluorescence of CCDC55 in mouse brain...