

Product Datasheet

CCDC69 Antibody (orb1240024)

Description

CCDC69 Antibody

Species/Host

Gallus

Reactivity

Human, Mouse, Rat

Conjugation

Unconjugated

Tested

ELISA, IF, IHC-P, WB

Applications

Immunogen

CCDC69 antibody was raised against a 16 amino acid synthetic peptide near the amino terminus of human CCDC69. The immunogen is located within amino acids 150 - 200 of CCDC69.

Target

CCDC69

Preservatives

CCDC69 Antibody is supplied in PBS containing 0.02% sodium azide.

Form/Appearance

Liquid

Concentration

1 mg/mL

Storage

CCDC69 antibody can be stored at 4°C for three months and -20°C, stable for up to one year. As with all antibodies care should be taken to avoid repeated freeze thaw cycles. Antibodies should not be exposed to prolonged high temperatures.

Note

For research use only

Application notes

CCDC69 antibody can be used for detection of CCDC69 by Western blot at 1 µg/mL. Antibody can also be used for immunohistochemistry starting at 5 µg/mL. For immunofluorescence start at 20 µg/mL. Antibody validated: Western Blot in mouse samples; Immunohistochemistry in human samples and Immunofluorescence in human samples. All other applications and species not yet tested.

Isotype

IgY

Clonality

Polyclonal

Uniprot ID

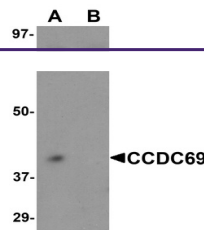
[A6NI79](#)

NCBI

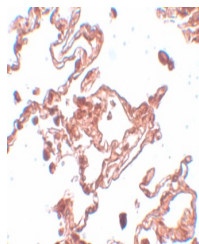
[NP_056436](#)

Dilution Range

CCDC69 antibody can be used for detection of CCDC69 by Western blot at 1 µg/mL. Antibody can also be used for immunohistochemistry starting at 5 µg/mL. For immunofluorescence start at 20 µg/mL. Antibody validated: Western Blot in mouse samples; Immunohistochemistry in human samples

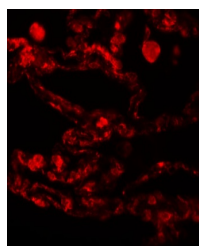


Western blot analysis of CCDC69 in mouse...



Immunohistochemistry of CCDC69 in human

...



Immunofluorescence of CCDC69 in human lu...