

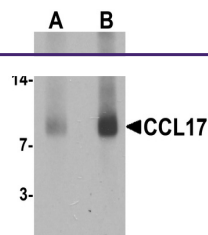
Product Datasheet

CCL17 Antibody (orb1240022)

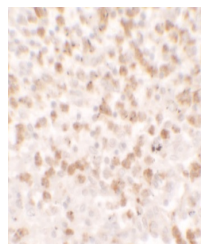
Description

CCL17 Antibody

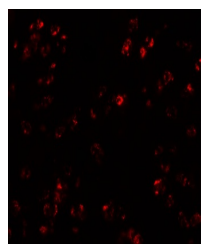
Species/Host	Rabbit
Reactivity	Human, Mouse, Rat
Conjugation	Unconjugated
Tested Applications	ELISA, IF, IHC-P, WB
Immunogen	Rabbit polyclonal CCL17 antibody was raised against a 16 amino acid peptide near the carboxy terminus of human CCL17. The immunogen is located within the last 50 amino acids of CCL17.
Target	CCL17
Preservatives	CCL17 Antibody is supplied in PBS containing 0.02% sodium azide.
Form/Appearance	Liquid
Concentration	1 mg/mL
Storage	CCL17 antibody can be stored at 4°C for three months and -20°C, stable for up to one year.
Note	For research use only
Application notes	CCL17 antibody can be used for detection of CCL17 by Western blot at 1 - 2 µg/mL. Antibody validated: Western Blot in rat samples; Immunohistochemistry in human samples and Immunofluorescence in human samples. All other applications and species not yet tested.
Isotype	IgG
Clonality	Polyclonal
MW	10 kDa
Uniprot ID	Q92583
NCBI	NP_002978
Dilution Range	CCL17 antibody can be used for detection of CCL17 by Western blot at 1 - 2 µg/mL. Antibody validated: Western Blot in rat samples; Immunohistochemistry in human samples and Immunofluorescence in human samples. All other applications and species not yet tested.
Expiration Date	12 months from date of receipt.



Western blot analysis of CCL17 in rat sp...



Immunohistochemistry of CCL17 in human s...



Immunofluorescence of CCL17 in human spl...