

## Product Datasheet

### CCP110 Antibody (orb1240018)

## Description

CCP110 Antibody

### Species/Host

Rabbit

### Reactivity

Human, Mouse, Rat

### Conjugation

Unconjugated

### Tested

ELISA, IF, IHC-P, WB

### Applications

### Immunogen

CCP110 antibody was raised against a 17 amino acid synthetic peptide near the carboxy terminus of human CCP110. The immunogen is located within the last 50 amino acids of CCP110.

### Target

CCP110

### Preservatives

CCP110 Antibody is supplied in PBS containing 0.02% sodium azide.

### Form/Appearance

Liquid

### Concentration

1 mg/mL

### Storage

CCP110 antibody can be stored at 4°C for three months and -20°C, stable for up to one year. As with all antibodies care should be taken to avoid repeated freeze thaw cycles. Antibodies should not be exposed to prolonged high temperatures.

### Note

For research use only

### Application notes

CCP110 antibody can be used for detection of CCP110 by Western blot at 1 µg/mL. Antibody can also be used for immunohistochemistry starting at 5 µg/mL. For immunofluorescence start at 5 µg/mL. Antibody validated: Western Blot in human samples; Immunohistochemistry in rat samples and Immunofluorescence in rat samples. All other applications and species not yet tested.

### Isotype

IgG

### Clonality

Polyclonal

### MW

Predicted: 110 kDa Observed: 110 kDa

### Uniprot ID

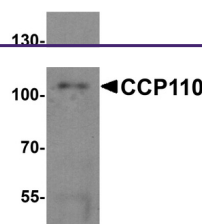
[O43303](#)

### NCBI

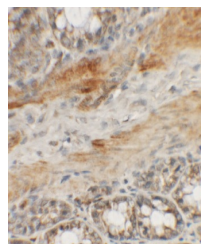
[NP\\_001185951](#)

### Dilution Range

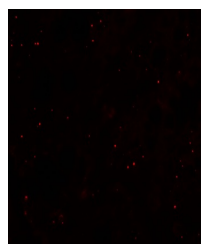
CCP110 antibody can be used for detection of CCP110 by Western blot at 1 µg/mL. Antibody can also be used for immunohistochemistry starting at 5 µg/mL. For immunofluorescence start at 5 µg/mL. Antibody validated: Western Blot in human



Western blot analysis of CCP110 in human...



Immunohistochemistry of CCP110 in rat co...



Immunofluorescence of CCP110 in rat colo...