

Product Datasheet

SOX2 Antibody (orb1240008)

Description

SOX2 Antibody

Species/Host

Rabbit

Reactivity

Human, Mouse, Rat

Conjugation

Unconjugated

Tested

ELISA, ICC, IF, IHC-P, WB

Applications

Immunogen

SOX2 antibody was raised against a 15 amino acid synthetic peptide near the amino terminus of human SOX. The immunogen is located within the first 50 amino acids of SOX2.

Target

SOX2

Preservatives

SOX2 Antibody is supplied in PBS containing 0.02% sodium azide.

Form/Appearance

Liquid

Concentration

1 mg/mL

Storage

SOX2 antibody can be stored at 4°C for three months and -20°C, stable for up to one year. As with all antibodies care should be taken to avoid repeated freeze thaw cycles. Antibodies should not be exposed to prolonged high temperatures.

Note

For research use only

Application notes

SOX2 antibody can be used for detection of SOX2 by Western blot at 1 - 2 µg/mL. Antibody can also be used for immunohistochemistry starting at 5 µg/mL and immunocytochemistry starting at 5 µg/mL. For immunofluorescence start at 20 µg/mL. Antibody validated: Western Blot in mouse samples; Immunohistochemistry in mouse samples; Immunocytochemistry in mouse samples and Immunofluorescence in mouse samples. All other applications and species not yet tested.

Isotype

IgG

Clonality

Polyclonal

Uniprot ID

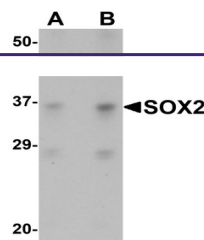
[P48431](#)

NCBI

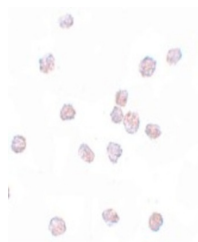
[NP_003097](#)

Dilution Range

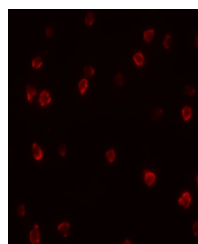
SOX2 antibody can be used for detection of SOX2 by Western blot at 1 - 2 µg/mL. Antibody can also be used for immunohistochemistry starting at 5 µg/mL and immunocytochemistry starting at 5 µg/mL. For



Western blot analysis of SOX2 in 3T3 cells...



Immunocytochemistry of SOX2 in 3T3 cells...



Immunofluorescence of SOX2 in 3T3 cells

...