

Product Datasheet

CDIP1 Antibody (orb1239999)

Description

CDIP1 Antibody

Species/Host

Rabbit

Reactivity

Human, Mouse

Conjugation

Unconjugated

Tested

ELISA, IF, IHC-P, WB

Applications

Immunogen

CDIP antibody was raised against a 16 amino acid synthetic peptide near the center of human CDIP. The immunogen is located within amino acids 40 - 90 of CDIP.

Target

CDIP1

Preservatives

CDIP Antibody is supplied in PBS containing 0.02% sodium azide.

Form/Appearance

Liquid

Concentration

1 mg/mL

Storage

CDIP antibody can be stored at 4°C for three months and -20°C, stable for up to one year. As with all antibodies care should be taken to avoid repeated freeze thaw cycles. Antibodies should not be exposed to prolonged high temperatures.

Note

For research use only

Application notes

CDIP antibody can be used for detection of CDIP by Western blot at 1 - 2 µg/mL. Antibody can also be used for immunohistochemistry starting at 2.5 µg/mL. For immunofluorescence start at 20 µg/mL. Antibody validated: Western Blot in human samples; Immunohistochemistry in mouse samples and Immunofluorescence in mouse samples. All other applications and species not yet tested.

Isotype

IgG

Clonality

Polyclonal

Uniprot ID

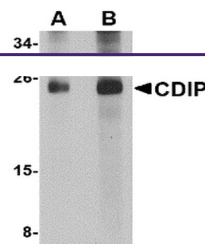
Q9H305

NCBI

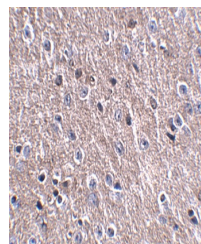
NP_037531

Dilution Range

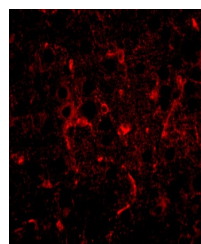
CDIP antibody can be used for detection of CDIP by Western blot at 1 - 2 µg/mL. Antibody can also be used for immunohistochemistry starting at 2.5 µg/mL. For immunofluorescence start at 20 µg/mL. Antibody validated: Western Blot in human samples; Immunohistochemistry in mouse samples



Western blot analysis of CDIP in human brain tissue.



Immunohistochemistry of CDIP in mouse brain tissue.



Immunofluorescence of CDIP in mouse brain tissue.