

Product Datasheet

CHAD Antibody (orb1239985)

Description

CHAD Antibody

Species/Host

Rabbit

Reactivity

Human, Mouse, Rat

Conjugation

Unconjugated

Tested

ELISA, ICC, WB

Applications

Immunogen

Chondroadherin antibody was raised against a 17 amino acid peptide near the carboxy terminus of human Chondroadherin. The immunogen is located within the last 50 amino acids of Chondroadherin.

Target

CHAD

Preservatives

Chondroadherin antibody is supplied in PBS containing 0.02% sodium azide.

Form/Appearance

Liquid

Concentration

1 mg/mL

Storage

Chondroadherin antibody can be stored at 4°C for three months and -20°C, stable for up to one year.

Note

For research use only

Application notes

Chondroadherin antibody can be used for detection of Chondroadherin by Western blot at 1 - 2 µg/ml. Antibody can also be used for immunocytochemistry starting at 5 µg/mL. Antibody validated: Western Blot in mouse samples and Immunocytochemistry in mouse samples. All other applications and species not yet tested.

Isotype

IgG

Clonality

Polyclonal

MW

Predicted: 38 kDa Observed: 36 kDa

Uniprot ID

[O15335](#)

NCBI

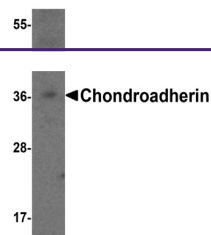
[NP_001258](#)

Dilution Range

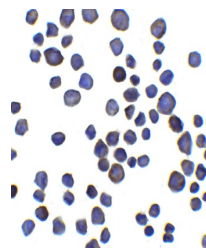
Chondroadherin antibody can be used for detection of Chondroadherin by Western blot at 1 - 2 µg/ml. Antibody can also be used for immunocytochemistry starting at 5 µg/mL. Antibody validated: Western Blot in mouse samples and Immunocytochemistry in mouse samples. All other applications and species not yet tested.

Expiration Date

12 months from date of receipt.



Western blot analysis of Chondroadherin ...



Immunocytochemistry of Chondroadherin in...