

Product Datasheet

CHORDC1 Antibody (orb1239984)

Description
CHORDC1 Antibody
Species/Host

Rabbit

Reactivity

Human, Mouse, Rat

Conjugation

Unconjugated

Tested

ELISA, ICC, IF, WB

Applications
Immunogen

CHORDC1 antibody was raised against a 21 amino acid synthetic peptide near the amino terminus of human CHORDC1. The immunogen is located within amino acids 50 - 100 of CHORDC1.

Target

CHORDC1

Preservatives

CHORDC1 Antibody is supplied in PBS containing 0.02% sodium azide.

Form/Appearance

Liquid

Concentration

1 mg/mL

Storage

CHORDC1 antibody can be stored at 4°C for three months and -20°C, stable for up to one year. As with all antibodies care should be taken to avoid repeated freeze thaw cycles. Antibodies should not be exposed to prolonged high temperatures.

Note

For research use only

Application notes

CHORDC1 antibody can be used for detection of CHORDC1 by Western blot at 1 - 2 µg/mL. Antibody can also be used for immunocytochemistry starting at 2.5 µg/mL. For immunofluorescence start at 20 µg/mL. Antibody validated: Western Blot in human samples; Immunocytochemistry in human samples and Immunofluorescence in human samples. All other applications and species not yet tested.

Isotype

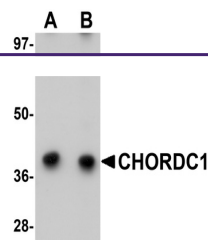
IgG

Clonality

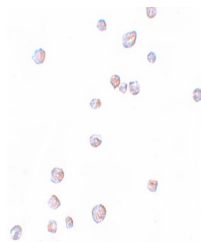
Polyclonal

Uniprot ID
Q9UHD1
NCBI
NP_036256
Dilution Range

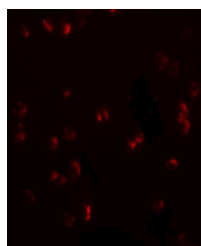
CHORDC1 antibody can be used for detection of CHORDC1 by Western blot at 1 - 2 µg/mL. Antibody can also be used for immunocytochemistry starting at 2.5 µg/mL. For immunofluorescence start at 20 µg/mL. Antibody validated: Western Blot in human samples; Immunocytochemistry in human samples



Western blot analysis of CHORDC1 in 293 ...



Immunocytochemistry of CHORDC1 in 293 ce...



Immunofluorescence of CHORDC1 in 293 cel...