

Product Datasheet

CIDEA Antibody (orb1239982)

Description

CIDEA Antibody

Species/Host

Rabbit

Reactivity

Human

Conjugation

Unconjugated

Tested

ELISA, IF, IHC-P, WB

Applications

Immunogen

CIDE-A antibody was raised against a 18 amino acid peptide near the carboxy terminus of human CIDE-A. The immunogen is located within the last 50 amino acids of CIDE-A.

Target

CIDEA

Preservatives

CIDE-A Antibody is supplied in PBS containing 0.02% sodium azide.

Form/Appearance

Liquid

Concentration

1 mg/ml

Storage

CIDE-A antibody can be stored at 4°C for three months and -20°C, stable for up to one year. As with all antibodies care should be taken to avoid repeated freeze thaw cycles. Antibodies should not be exposed to prolonged high temperatures.

Note

For research use only

Application notes

CIDE-A antibody can be used for detection of CIDE-A by Western blot at 2 µg/mL. An approximately 23 kDa band can be detected. Antibody can also be used for immunohistochemistry starting at 5 µg/mL. For immunofluorescence start at 20 µg/mL. Antibody validated: Western Blot in human samples; Immunohistochemistry in human samples and Immunofluorescence in human samples. All other applications and species not yet tested.

Isotype

IgG

Clonality

Polyclonal

MW

23 kDa

Uniprot ID

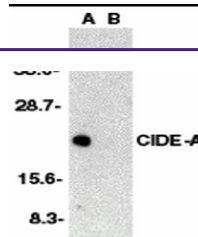
[O60543](#)

NCBI

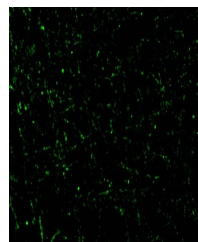
[AF041378](#)

Dilution Range

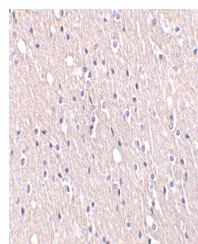
CIDE-A antibody can be used for detection of CIDE-A by Western blot at 2 µg/mL. An approximately 23 kDa band can be detected. Antibody can also be used for immunohistochemistry starting at 5 µg/mL.



Western blot analysis of CIDE-A in human...



Immunofluorescence of CIDE-A in Human Br...



Immunohistochemistry of CIDE-A in human ...

Biorbyt Ltd.

7 Signet Court, Swann's Road, Cambridge, CB5 8LA, United Kingdom

Email: info@biorbyt.com | Phone: +44 (0) 1223 859-353 | Fax: +44 (0)1223 280 240

Biorbyt LLC.

68 TW Alexander Drive
Research Triangle Park
Durham, North Carolina
27709, United States

Email: info@biorbyt.com | Phone: +1 (415) 906-5211 | Fax: +1 (415) 651-8558

Expiration Date

12 months from date of receipt.