

## Product Datasheet

### CIITA Antibody (orb1239978)

## Description

## CIITA Antibody

### Species/Host

Rabbit

### Reactivity

Human, Mouse, Rat

### Conjugation

Unconjugated

### Tested

ELISA, IF, IHC-P, WB

### Applications

### Immunogen

CIITA antibody was raised against a 16 amino acid synthetic peptide near the amino terminus of human CIITA. The immunogen is located within amino acids 120 - 170 of CIITA.

### Target

CIITA

### Preservatives

CIITA Antibody is supplied in PBS containing 0.02% sodium azide.

### Form/Appearance

Liquid

### Concentration

1 mg/mL

### Storage

CIITA antibody can be stored at 4°C for three months and -20°C, stable for up to one year. As with all antibodies care should be taken to avoid repeated freeze thaw cycles. Antibodies should not be exposed to prolonged high temperatures.

### Note

For research use only

### Application notes

CIITA antibody can be used for detection of CIITA by Western blot at 1 µg/mL. Antibody can also be used for immunohistochemistry starting at 10 µg/mL. For immunofluorescence start at 20 µg/mL. Antibody validated: Western Blot in rat samples; Immunohistochemistry in human samples and Immunofluorescence in human samples. All other applications and species not yet tested.

### Isotype

IgG

### Clonality

Polyclonal

### MW

Predicted: 124 kDa Observed: 125 kDa

### Uniprot ID

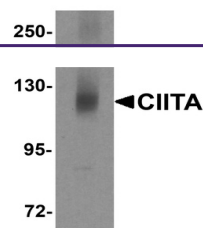
[P33076](#)

### NCBI

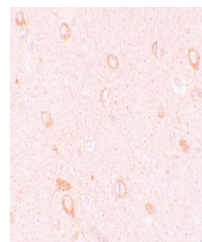
[P33076](#)

### Dilution Range

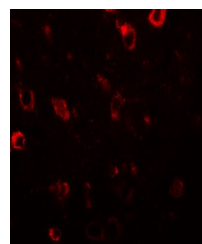
CIITA antibody can be used for detection of CIITA by Western blot at 1 µg/mL. Antibody can also be used for immunohistochemistry starting at 10 µg/mL. For immunofluorescence start at 20 µg/mL. Antibody validated: Western Blot in rat samples;



Western blot analysis of CIITA in rat br...



Immunohistochemistry of CIITA in human b...



Immunofluorescence of CIITA in human bra...