

Product Datasheet

CISD2 Antibody (orb1239974)

Description

CISD2 Antibody

Species/Host

Rabbit

Reactivity

Human, Mouse, Rat

Conjugation

Unconjugated

Tested

ELISA, IF, IHC-P, WB

Applications

Immunogen

CISD2 antibody was raised against a 15 amino acid peptide near the center of human CISD2. The immunogen is located within amino acids 40 - 90 of CISD2.

Target

CISD2

Preservatives

CISD2 Antibody is supplied in PBS containing 0.02% sodium azide.

Form/Appearance

Liquid

Concentration

1 mg/mL

Storage

CISD2 antibody can be stored at 4°C for three months and -20°C, stable for up to one year.

Note

For research use only

Application notes

CISD2 antibody was raised against a 15 amino acid peptide near the center of human CISD2. Antibody validated: Western Blot in rat samples; Immunohistochemistry in rat samples and Immunofluorescence in rat samples. All other applications and species not yet tested.

Isotype

IgG

Clonality

Polyclonal

MW

Predicted: 15 kDa Observed: 15 kDa

Uniprot ID

Q8N5K1

NCBI

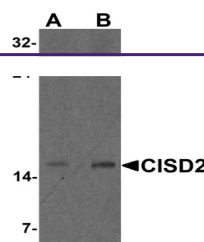
NP_001008389

Dilution Range

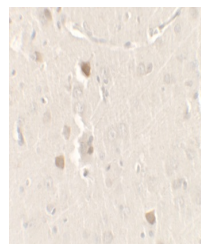
CISD2 antibody was raised against a 15 amino acid peptide near the center of human CISD2. Antibody validated: Western Blot in rat samples; Immunohistochemistry in rat samples and Immunofluorescence in rat samples. All other applications and species not yet tested.

Expiration Date

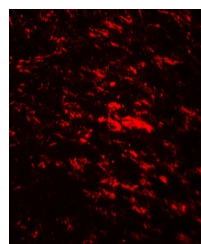
12 months from date of receipt.



Western blot analysis of CISD2 in rat br...



Immunohistochemistry of CISD2 in rat bra...



Immunofluorescence of CISD2 in rat brain...