

Product Datasheet

CRISP2 Antibody (orb1239956)

Description

CRISP2 Antibody

Species/Host

Rabbit

Reactivity

Human

Conjugation

Unconjugated

Tested

ELISA, IF, IHC-P, WB

Applications

Immunogen

CRISP2 antibody was raised against a 15 amino acid synthetic peptide near the amino terminus of human CRISP2. The immunogen is located within the first 50 amino acids of CRISP2.

Target

CRISP2

Preservatives

CRISP2 Antibody is supplied in PBS containing 0.02% sodium azide.

Form/Appearance

Liquid

Concentration

1 mg/mL

Storage

CRISP2 antibody can be stored at 4°C for three months and -20°C, stable for up to one year. As with all antibodies care should be taken to avoid repeated freeze thaw cycles. Antibodies should not be exposed to prolonged high temperatures.

Note

For research use only

Application notes

CRISP2 antibody can be used for detection of CRISP2 by Western blot at 0.5 - 1 µg/mL. Antibody can also be used for immunohistochemistry starting at 10 µg/mL. For immunofluorescence start at 20 µg/mL. Antibody validated: Western Blot in human samples; Immunohistochemistry in human samples and Immunofluorescence in human samples. All other applications and species not yet tested.

Isotype

IgG

Clonality

Polyclonal

Uniprot ID

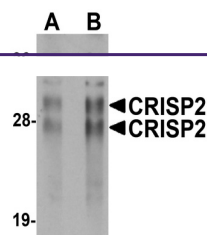
P16562

NCBI

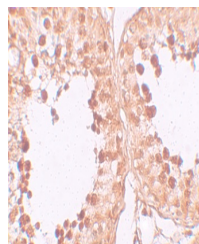
NP_001135880

Dilution Range

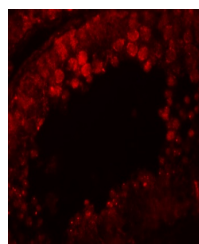
CRISP2 antibody can be used for detection of CRISP2 by Western blot at 0.5 - 1 µg/mL. Antibody can also be used for immunohistochemistry starting at 10 µg/mL. For immunofluorescence start at 20 µg/mL. Antibody validated: Western Blot in human samples; Immunohistochemistry in human samples



Western blot analysis of CRISP2 in human...



Immunohistochemistry of CRISP2 in human ...



Immunofluorescence of CRISP in human tes...