

Product Datasheet

CRMP1 Antibody (orb1239954)

Description

CRMP1 Antibody

Species/Host

Rabbit

Reactivity

Human, Mouse

Conjugation

Unconjugated

Tested

ELISA, IF, IHC-P, WB

Applications

Immunogen

CRMP1 antibody was raised against a 16 amino acid synthetic peptide from near the center of human CRMP1. The immunogen is located within amino acids 290 - 340 of CRMP1.

Target

CRMP1

Preservatives

CRMP1 Antibody is supplied in PBS containing 0.02% sodium azide.

Form/Appearance

Liquid

Concentration

1 mg/mL

Storage

CRMP1 antibody can be stored at 4°C for three months and -20°C, stable for up to one year. As with all antibodies care should be taken to avoid repeated freeze thaw cycles. Antibodies should not be exposed to prolonged high temperatures.

Note

For research use only

Application notes

CRMP1 antibody can be used for the detection of CRMP1 by Western blot at 0.5 µg/mL. Antibody can also be used for immunohistochemistry starting at 10 µg/mL. For immunofluorescence start at 20 µg/mL. Antibody validated: Western Blot in human samples; Immunohistochemistry in human samples and Immunofluorescence in human samples. All other applications and species not yet tested.

Isotype

IgG

Clonality

Polyclonal

MW

Predicted: 63, 75 kDa Observed: 63, 75 kDa

Uniprot ID

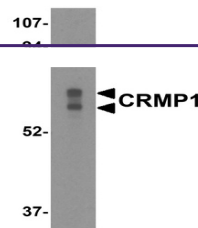
[Q14194](#)

NCBI

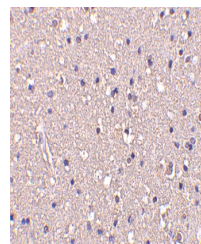
[AAH07613](#)

Dilution Range

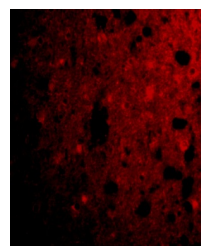
CRMP1 antibody can be used for the detection of CRMP1 by Western blot at 0.5 µg/mL. Antibody can also be used for immunohistochemistry starting at 10 µg/mL. For immunofluorescence start at 20 µg/mL. Antibody validated: Western Blot in human



Western blot analysis of CRMP1 in Caco-2...



Immunohistochemistry of CRMP1 in human b...



Immunofluorescence of CRMP1 in Human Bra...