

Product Datasheet

C1QTNF1 Antibody (orb1239945)

Description

C1QTNF1 Antibody

Species/Host

Rabbit

Reactivity

Human, Mouse, Rat

Conjugation

Unconjugated

Tested

ELISA, IF, IHC-P, WB

Applications
Immunogen

CTRP1 (NT) antibody was raised against a 15 amino acid synthetic peptide from near the amino-terminus of human CTRP1. The immunogen is located within amino acids 40 - 90 of CTRP1.

Target

C1QTNF1

Preservatives

CTRP1 Antibody is supplied in PBS containing 0.02% sodium azide.

Form/Appearance

Liquid

Concentration

1 mg/mL

Storage

CTRP1 antibody can be stored at 4°C for three months and -20°C, stable for up to one year. As with all antibodies care should be taken to avoid repeated freeze thaw cycles. Antibodies should not be exposed to prolonged high temperatures.

Note

For research use only

Application notes

CTRP1 antibody can be used for the detection of CTRP1 by Western blot at 1 and 2 µg/mL. Antibody can also be used for immunohistochemistry starting at 10 µg/mL. For immunofluorescence start at 20 µg/mL. Antibody validated: Western Blot in human samples; Immunohistochemistry in human samples and Immunofluorescence in human samples. All other applications and species not yet tested.

Isotype

IgG

Clonality

Polyclonal

Uniprot ID

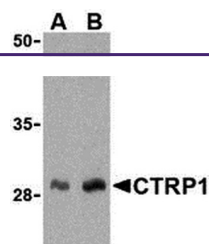
[Q9BXJ1](#)

NCBI

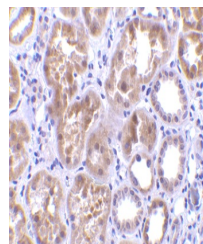
[NP_940995](#)

Dilution Range

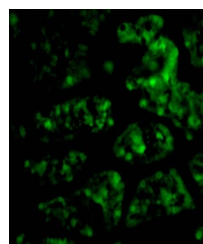
CTRP1 antibody can be used for the detection of CTRP1 by Western blot at 1 and 2 µg/mL. Antibody can also be used for immunohistochemistry starting at 10 µg/mL. For immunofluorescence start at 20 µg/mL. Antibody validated: Western Blot in human samples; Immunohistochemistry in human samples



Western blot analysis of CTRP1 in human ...



Immunohistochemistry of CTRP1 in human k...



Immunofluorescence of CTRP1 in Human Kid...