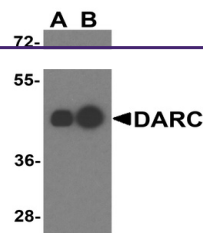


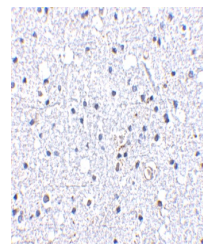
Product Datasheet

DARC Antibody (orb1239915)

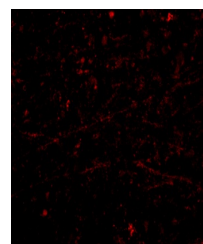
Description	DARC Antibody
Species/Host	Rabbit
Reactivity	Human
Conjugation	Unconjugated
Tested Applications	ELISA, IF, IHC-P, WB
Immunogen	DARC antibody was raised against a 18 amino acid synthetic peptide from near the amino terminus of human DARC. The immunogen is located within the first 50 amino acids of DARC.
Target	DARC
Preservatives	DARC Antibody is supplied in PBS containing 0.02% sodium azide.
Form/Appearance	Liquid
Concentration	1 mg/mL
Storage	DARC antibody can be stored at 4°C for three months and -20°C, stable for up to one year. As with all antibodies care should be taken to avoid repeated freeze thaw cycles. Antibodies should not be exposed to prolonged high temperatures.
Note	For research use only
Application notes	DARC antibody can be used for detection of DARC by Western blot at 0.5 - 2 µg/mL. Antibody can also be used for immunohistochemistry starting at 5 µg/mL. For immunofluorescence start at 20 µg/mL. Antibody validated: Western Blot in human samples; Immunohistochemistry in human samples and Immunofluorescence in human samples. All other applications and species not yet tested.
Isotype	IgG
Clonality	Polyclonal
Uniprot ID	Q16570
NCBI	Q16570
Dilution Range	DARC antibody can be used for detection of DARC by Western blot at 0.5 - 2 µg/mL. Antibody can also be used for immunohistochemistry starting at 5 µg/mL. For immunofluorescence start at 20 µg/mL. Antibody validated: Western Blot in human samples; Immunohistochemistry in human samples and



Western blot analysis of DARC in human I...



Immunohistochemistry of DARC in human br...



Immunofluorescence of DARC in Human Brai...