

Product Datasheet

PRDM16 Antibody (orb1239909)

Description

PRDM16 Antibody

Species/Host

Rabbit

Reactivity

Human, Mouse

Conjugation

Unconjugated

Tested

ELISA, IF, IHC-P, WB

Applications

Immunogen

PRDM16 antibody was raised against a 17 amino acid synthetic peptide from near the carboxy terminus of human PRDM16. The immunogen is located within amino acids 1120 - 1170 of PRDM16.

Target

PRDM16

Preservatives

PRDM16 Antibody is supplied in PBS containing 0.02% sodium azide.

Form/Appearance

Liquid

Concentration

1 mg/mL

Storage

PRDM16 antibody can be stored at 4°C up to one year. Antibodies should not be exposed to prolonged high temperatures.

Note

For research use only

Application notes

PRDM16 antibody can be used for detection of PRDM16 by Western blot at 1 µg/mL. Antibody can also be used for immunohistochemistry starting at 2 µg/mL. For immunofluorescence start at 20 µg/mL. Antibody validated: Western Blot in human samples; Immunohistochemistry in human and mouse samples and Immunofluorescence in human and mouse samples. All other applications and species not yet tested.

Isotype

IgG

Clonality

Polyclonal

MW

Predicted: 109, 120, 140 kDa Observed: 140 kDa

Uniprot ID

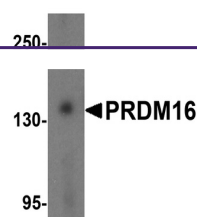
[Q9HAZ2](#)

NCBI

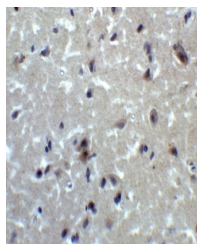
[CAH71530](#)

Dilution Range

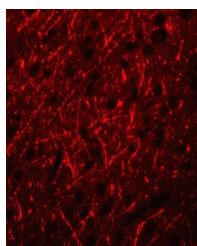
PRDM16 antibody can be used for detection of PRDM16 by Western blot at 1 µg/mL. Antibody can also be used for immunohistochemistry starting at 2 µg/mL. For immunofluorescence start at 20 µg/mL. Antibody validated: Western Blot in human samples; Immunohistochemistry in human and



Western blot analysis of PRDM16 in K562 ...



Immunohistochemistry of PRDM16 in human ...



Immunofluorescence of PRDM16 in Human Br...