

Product Datasheet

TNFRSF10C Antibody (orb1239905)

Description

TNFRSF10C Antibody

Species/Host

Rabbit

Conjugation

Unconjugated

Tested

ELISA, IF, WB

Applications

Immunogen

DcR1 antibody was raised against a peptide corresponding to amino acids in the extracellular domain of human DcR1 precursor. The immunogen is located within amino acids 90 - 140 of DcR1.

Target

TNFRSF10C

Preservatives

DcR1 Antibody is supplied in PBS containing 0.02% sodium azide.

Form/Appearance

Liquid

Concentration

1 mg/ml

Storage

DcR1 antibody can be stored at 4°C for three months and -20°C, stable for up to one year. As with all antibodies care should be taken to avoid repeated freeze thaw cycles. Antibodies should not be exposed to prolonged high temperatures.

Note

For research use only

Application notes

DcR1 antibody can be used for detection of DcR1 by Western blot at 1 µg/mL. An approximate 65 kDa band can be detected. Antibody can also be used for immunofluorescence starting at 10 µg/mL. For immunofluorescence start at 20 µg/mL. Antibody validated: Western Blot in human, mouse, and rat samples and Immunofluorescence in rat samples. All other applications and species not yet tested.

Isotype

IgG

Clonality

Polyclonal

MW

65 kDa

Uniprot ID

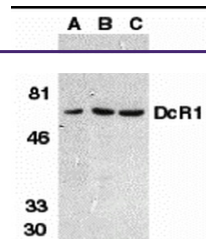
[O14798](#)

NCBI

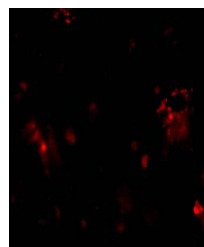
[AF012536](#)

Dilution Range

DcR1 antibody can be used for detection of DcR1 by Western blot at 1 µg/mL. An approximate 65 kDa band can be detected. Antibody can also be used for immunofluorescence starting at 10 µg/mL. For immunofluorescence start at 20 µg/mL. Antibody validated: Western Blot in human, mouse, and rat

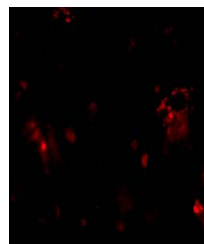


Western blot analysis of DcR1 in HeLa cells...



Immunofluorescence of DcR1 in rat liver

...



Immunofluorescence of DcR1 in Rat Liver

...