

Product Datasheet

TNFRSF6B Antibody (orb1239903)

Description

TNFRSF6B Antibody

Species/Host

Rabbit

Reactivity

Human, Mouse, Rat

Conjugation

Unconjugated

Tested

ELISA, IHC-P, WB

Applications

Immunogen

DcR3 antibody was raised against a peptide corresponding to amino acids near the amino terminus of human DcR3 precursor. The immunogen is located within the first 50 amino acids of DcR3.

Target

TNFRSF6B

Preservatives

DcR3 Antibody is supplied in PBS containing 0.02% sodium azide.

Form/Appearance

Liquid

Concentration

1 mg/ml

Storage

DcR3 antibody can be stored at 4°C for three months and -20°C, stable for up to one year. As with all antibodies care should be taken to avoid repeated freeze thaw cycles. Antibodies should not be exposed to prolonged high temperatures.

Note

For research use only

Application notes

DcR3 antibody can be used for detection of DcR3 expression by Western blot 0.5 µg/mL. An approximately 33 kDa band can be detected. Antibody can also be used for immunohistochemistry starting at 1 µg/mL. Antibody validated: Western Blot in human samples and Immunohistochemistry in human samples. All other applications and species not yet tested.

Isotype

IgG

Clonality

Polyclonal

MW

33 kDa

Uniprot ID

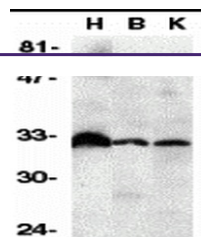
[O95407](#)

NCBI

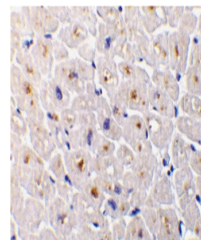
[AF104419](#)

Dilution Range

DcR3 antibody can be used for detection of DcR3 expression by Western blot 0.5 µg/mL. An approximately 33 kDa band can be detected. Antibody can also be used for immunohistochemistry starting at 1 µg/mL.



Western blot analysis of DcR3 in human h...



Immunohistochemistry of DcR3 in human he...