

Product Datasheet

CD209 Antibody (orb1239902)

Description

CD209 Antibody

Species/Host

Rabbit

Reactivity

Human

Conjugation

Unconjugated

Tested

ELISA, IF, IHC-P, WB

Applications

Immunogen

DC-SIGN antibody was raised against a synthetic peptide corresponding to 21 amino acids near the center of human DC-SIGN. The immunogen is located within the last 50 amino acids of DC-SIGN.

Target

CD209

Preservatives

DC-SIGN Antibody is supplied in PBS containing 0.02% sodium azide.

Form/Appearance

Liquid

Concentration

1 mg/mL

Storage

DC-SIGN antibody can be stored at 4°C for three months and -20°C, stable for up to one year. As with all antibodies care should be taken to avoid repeated freeze thaw cycles. Antibodies should not be exposed to prolonged high temperatures.

Note

For research use only

Application notes

DC-SIGN antibody can be used for detection of DC-SIGN by Western blot at 1 to 2 µg/mL. Antibody can also be used for immunohistochemistry starting at 10 µg/mL. For immunofluorescence start at 20 µg/mL. Antibody validated: Western Blot in human samples; Immunohistochemistry in human samples and Immunofluorescence in human samples. All other applications and species not yet tested.

Isotype

IgG

Clonality

Polyclonal

MW

Predicted: 44 kDa Observed: 47 kDa

Uniprot ID

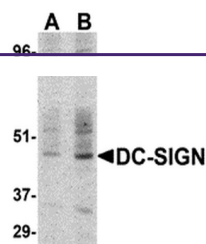
[Q9NNX6](#)

NCBI

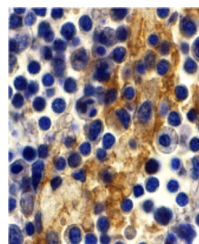
[Q9NNX6](#)

Dilution Range

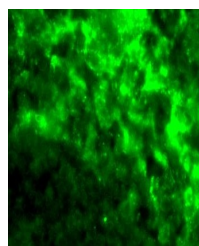
DC-SIGN antibody can be used for detection of DC-SIGN by Western blot at 1 to 2 µg/mL. Antibody can also be used for immunohistochemistry starting at 10 µg/mL. For immunofluorescence start at 20 µg/mL. Antibody validated: Western Blot in human



Western blot detection of DC-SIGN in hum...



Immunohistochemistry of DC-SIGN in human...



Immunofluorescence of DC-SIGN in Human L...