

Product Datasheet

KIAA0141 Antibody (orb1239890)

Description

KIAA0141 Antibody

Species/Host

Rabbit

Reactivity

Human, Rat

Conjugation

Unconjugated

Tested

ELISA, IF, WB

Applications

Immunogen

DELE antibody was raised against an 18 amino acid synthetic peptide near the amino terminus of human DELE. The immunogen is located within the first 50 amino acids of DELE.

Target

KIAA0141

Preservatives

DELE Antibody is supplied in PBS containing 0.02% sodium azide.

Form/Appearance

Liquid

Concentration

1 mg/mL

Storage

DELE antibody can be stored at 4°C for three months and -20°C, stable for up to one year. As with all antibodies care should be taken to avoid repeated freeze thaw cycles. Antibodies should not be exposed to prolonged high temperatures.

Note

For research use only

Application notes

DELE antibody can be used for detection of DELE by Western blot at 1 µg/mL. For immunofluorescence start at 20 µg/mL. Antibody validated: Western Blot in rat samples and Immunofluorescence in human samples. All other applications and species not yet tested.

Isotype

IgG

Clonality

Polyclonal

Uniprot ID

[Q14154](#)

NCBI

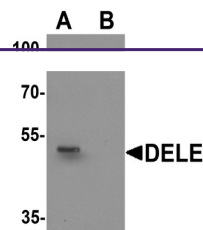
[NP_055588](#)

Dilution Range

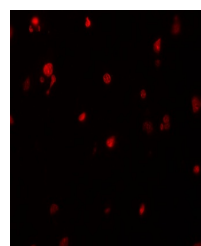
DELE antibody can be used for detection of DELE by Western blot at 1 µg/mL. For immunofluorescence start at 20 µg/mL. Antibody validated: Western Blot in rat samples and Immunofluorescence in human samples. All other applications and species not yet tested.

Expiration Date

12 months from date of receipt.



Western blot analysis of DELE in rat brain...



Immunofluorescence of DELE in human brain...