

Product Datasheet

GOPC Antibody (orb1239886)

Description

GOPC Antibody

Species/Host

Rabbit

Reactivity

Human, Mouse, Rat

Conjugation

Unconjugated

Tested

ELISA, IF, IHC-P, WB

Applications
Immunogen

PIST antibody was raised against a 16 amino acid synthetic peptide from near the carboxy terminus of human PIST. The immunogen is located within amino acids 360 - 410 of PIST.

Target

GOPC

Preservatives

PIST Antibody is supplied in PBS containing 0.02% sodium azide.

Form/Appearance

Liquid

Concentration

1 mg/mL

Storage

PIST antibody can be stored at 4°C for three months and -20°C, stable for up to one year. As with all antibodies care should be taken to avoid repeated freeze thaw cycles. Antibodies should not be exposed to prolonged high temperatures.

Note

For research use only

Application notes

PIST antibody can be used for the detection of PIST by Western blot at 1 - 4 µg/mL. Antibody can also be used for immunohistochemistry starting at 2 µg/mL. For immunofluorescence start at 10 µg/mL. Antibody validated: Western Blot in rat samples; Immunohistochemistry in human and rat samples and Immunofluorescence in human and rat samples. All other applications and species not yet tested.

Isotype

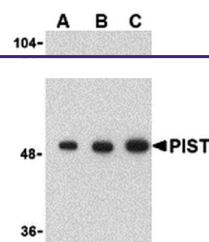
IgG

Clonality

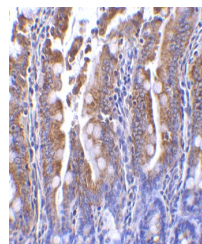
Polyclonal

Uniprot ID
Q9HD26
NCBI
AAG00572
Dilution Range

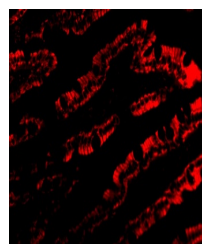
PIST antibody can be used for the detection of PIST by Western blot at 1 - 4 µg/mL. Antibody can also be used for immunohistochemistry starting at 2 µg/mL. For immunofluorescence start at 10 µg/mL. Antibody validated: Western Blot in rat samples; Immunohistochemistry in human and rat samples



Western blot analysis of PIST in rat col...



Immunohistochemistry of PIST in rat colo...



Immunofluorescence of PIST in Rat Colon ...