

Product Datasheet

DISC1 Antibody (orb1239879)

Description

DISC1 Antibody

Species/Host

Rabbit

Reactivity

Human, Mouse

Conjugation

Unconjugated

Tested

ELISA, ICC, IF, WB

Applications

Immunogen

DISC1 antibody was raised against an 18 amino acid synthetic peptide from near the center of human DISC1. The immunogen is located within amino acids 350 - 400 of DISC1.

Target

DISC1

Preservatives

DISC1 Antibody is supplied in PBS containing 0.02% sodium azide.

Form/Appearance

Liquid

Concentration

1 mg/mL

Storage

DISC1 antibody can be stored at 4°C for three months and -20°C, stable for up to one year. As with all antibodies care should be taken to avoid repeated freeze thaw cycles. Antibodies should not be exposed to prolonged high temperatures.

Note

For research use only

Application notes

DISC1 antibody can be used for detection of DISC1 by Western blot at 0.5 - 2 µg/mL. Antibody can also be used for immunocytochemistry starting at 5 µg/mL. For immunofluorescence start at 20 µg/mL. Antibody validated: Western Blot in human samples; Immunocytochemistry in human samples and Immunofluorescence in human samples. All other applications and species not yet tested.

Isotype

IgG

Clonality

Polyclonal

MW

Predicted: 72, 92, 94 kDa Observed: 94 kDa

Uniprot ID

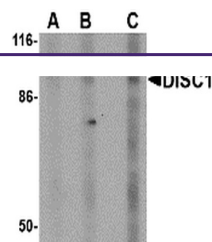
[Q9NRI5](#)

NCBI

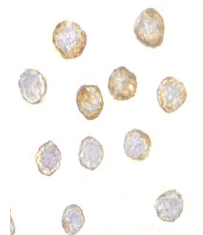
[NP_061132](#)

Dilution Range

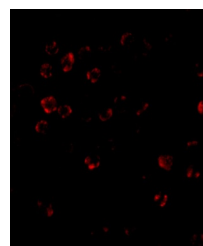
DISC1 antibody can be used for detection of DISC1 by Western blot at 0.5 - 2 µg/mL. Antibody can also be used for immunocytochemistry starting at 5 µg/mL. For immunofluorescence start at 20 µg/mL. Antibody validated: Western Blot in human samples;



Western blot analysis of DISC1 in SK-N-S...



Immunocytochemistry of DISC1 in HeLa cell...



Immunofluorescence of DISC1 in HeLa cell...