

Product Datasheet

DLK1 Antibody (orb1239877)

Description

DLK1 Antibody

Species/Host

Rabbit

Reactivity

Human, Mouse, Rat

Conjugation

Unconjugated

Tested

ELISA, ICC, IF, WB

Applications

Immunogen

DLK1 antibody was raised against an 18 amino acid synthetic peptide near the carboxy terminus of human DLK1. The immunogen is located within amino acids 260 - 310 of DLK1.

Target

DLK1

Preservatives

DLK1 Antibody is supplied in PBS containing 0.02% sodium azide.

Form/Appearance

Liquid

Concentration

1 mg/mL

Storage

DLK1 antibody can be stored at 4°C for three months and -20°C, stable for up to one year. As with all antibodies care should be taken to avoid repeated freeze thaw cycles. Antibodies should not be exposed to prolonged high temperatures.

Note

For research use only

Application notes

DLK1 antibody can be used for detection of DLK1 by Western blot at 1 - 2 µg/mL. Antibody validated: Western Blot in human samples; Immunocytochemistry in human samples and Immunofluorescence in human samples. All other applications and species not yet tested.

Isotype

IgG

Clonality

Polyclonal

MW

42 kDa

Uniprot ID

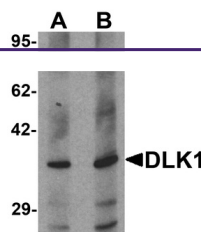
P80370

NCBI

NP_003827

Dilution Range

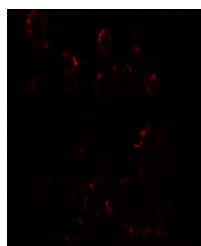
DLK1 antibody can be used for detection of DLK1 by Western blot at 1 - 2 µg/mL. Antibody validated: Western Blot in human samples; Immunocytochemistry in human samples and Immunofluorescence in human samples. All other applications and species not yet tested.



Western blot analysis of HepG2 in 293 ce...



Immunocytochemistry of DLK1 in HepG2 cel...



Immunofluorescence of DLK1 in HepG2 cell...