

Product Datasheet

PION Antibody (orb1239874)

Description

PION Antibody

Species/Host

Rabbit

Reactivity

Human, Mouse, Rat

Conjugation

Unconjugated

Tested

ELISA, IF, IHC-P, WB

Applications

Immunogen

PION antibody was raised against a 19 amino acid synthetic peptide near the carboxy terminus of human PION. The immunogen is located within amino acids 770 - 820 of PION.

Target

PION

Preservatives

PION Antibody is supplied in PBS containing 0.02% sodium azide.

Form/Appearance

Liquid

Concentration

1 mg/mL

Storage

PION antibody can be stored at 4°C for three months and -20°C, stable for up to one year. As with all antibodies care should be taken to avoid repeated freeze thaw cycles. Antibodies should not be exposed to prolonged high temperatures.

Note

For research use only

Application notes

PION antibody can be used for detection of PION by Western blot at 0.25 µg/mL. Antibody can also be used for immunohistochemistry starting at 5 µg/mL. For immunofluorescence start at 20 µg/mL. Antibody validated: Western Blot in mouse samples; Immunohistochemistry in human and mouse samples and Immunofluorescence in human and mouse samples. All other applications and species not yet tested.

Isotype

IgG

Clonality

Polyclonal

Uniprot ID

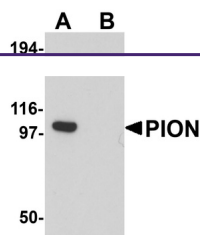
[A4D1B5](#)

NCBI

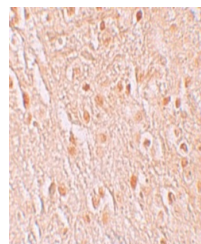
[NP_059135](#)

Dilution Range

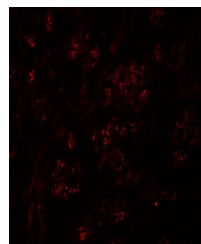
PION antibody can be used for detection of PION by Western blot at 0.25 µg/mL. Antibody can also be used for immunohistochemistry starting at 5 µg/mL. For immunofluorescence start at 20 µg/mL. Antibody validated: Western Blot in mouse samples;



Western blot analysis of PION in EL4 cells



Immunohistochemistry of PION in human brain



Immunofluorescence of PION in Human Brain