

Product Datasheet

DNM1L Antibody (orb1239873)

Description
DNM1L Antibody
Species/Host

Rabbit

Reactivity

Human, Mouse

Conjugation

Unconjugated

Tested

ELISA, ICC, IF, WB

Applications
Immunogen

DNM1L antibody was raised against a 19 amino acid peptide near the center of human DNM1L. The immunogen is located within amino acids 530 - 580 of DNM1L.

Target

DNM1L

Preservatives

DNM1L antibody is supplied in PBS containing 0.02% sodium azide.

Form/Appearance

Liquid

Concentration

1 mg/mL

Storage

DNM1L antibody can be stored at 4°C for three months and -20°C, stable for up to one year.

Note

For research use only

Application notes

DNM1L antibody can be used for detection of DNM1L by Western blot at 1 - 2 µg/ml. Antibody can also be used for Immunocytochemistry starting at 5 µg/mL. For immunofluorescence start at 20 µg/mL. Antibody validated: Western Blot in human samples; Immunocytochemistry in human samples and Immunofluorescence in human samples. All other applications and species not yet tested.

Isotype

IgG

Clonality

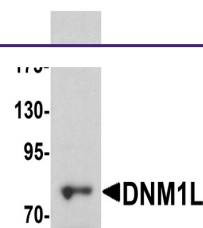
Polyclonal

MW

Predicted: 81 kDa Observed: 80 kDa

Uniprot ID
O00429
NCBI
NP_036192
Dilution Range

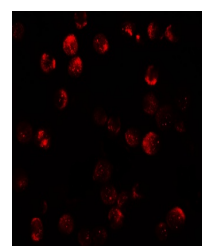
DNM1L antibody can be used for detection of DNM1L by Western blot at 1 - 2 µg/ml. Antibody can also be used for Immunocytochemistry starting at 5 µg/mL. For immunofluorescence start at 20 µg/mL. Antibody validated: Western Blot in human samples; Immunocytochemistry in human samples and Immunofluorescence in human samples. All other applications and species not yet tested.



Western blot analysis of DNM1L in HeLa cells



Immunocytochemistry of DNM1L in HeLa cells



Immunofluorescence of DNM1L in HeLa cells