

## Product Datasheet

### DPAGT1 Antibody (orb1239870)

**Description**

DPAGT1 Antibody

**Species/Host**

Rabbit

**Reactivity**

Human, Mouse

**Conjugation**

Unconjugated

**Tested**

ELISA, IF, IHC-P, WB

**Applications**
**Immunogen**

DPAGT1 antibody was raised against a 17 amino acid synthetic peptide near the amino terminus of human DPAGT1. The immunogen is located within amino acids 30 - 80 of DPAGT1.

**Target**

DPAGT1

**Preservatives**

DPAGT1 Antibody is supplied in PBS containing 0.02% sodium azide.

**Form/Appearance**

Liquid

**Concentration**

1 mg/mL

**Storage**

DPAGT1 antibody can be stored at 4°C for three months and -20°C, stable for up to one year. As with all antibodies care should be taken to avoid repeated freeze thaw cycles. Antibodies should not be exposed to prolonged high temperatures.

**Note**

For research use only

**Application notes**

DPAGT1 antibody can be used for detection of DPAGT1 by Western blot at 1 µg/mL. Antibody can also be used for immunohistochemistry starting at 2.5 µg/mL. For immunofluorescence start at 20 µg/mL. Antibody validated: Western Blot in mouse samples; Immunohistochemistry in human samples and Immunofluorescence in human samples. All other applications and species not yet tested.

**Isotype**

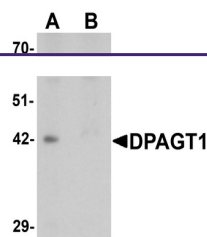
IgG

**Clonality**

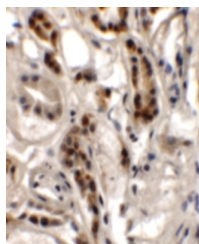
Polyclonal

**Uniprot ID**
**Q9H3H5**
**NCBI**
**NP\_001373**
**Dilution Range**

DPAGT1 antibody can be used for detection of DPAGT1 by Western blot at 1 µg/mL. Antibody can also be used for immunohistochemistry starting at 2.5 µg/mL. For immunofluorescence start at 20 µg/mL. Antibody validated: Western Blot in mouse samples; Immunohistochemistry in human samples

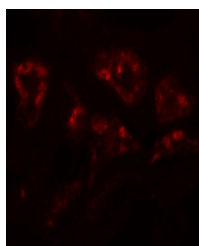


Western blot analysis of DPAGT1 in mouse...



Immunohistochemistry of DPAGT1 in human

...



Immunofluorescence of DPAGT1 in human ki...