

## Product Datasheet

### EMX2 Antibody (orb1239838)

## Description

EMX2 Antibody

### Species/Host

Rabbit

### Reactivity

Human

### Conjugation

Unconjugated

### Tested

ELISA, IF, IHC-P, WB

### Applications

### Immunogen

EMX2 antibody was raised against an 18 amino acid synthetic peptide near the center of human EMX2. The immunogen is located within amino acids 60 - 110 of EMX2.

### Target

EMX2

### Preservatives

EMX2 Antibody is supplied in PBS containing 0.02% sodium azide.

### Form/Appearance

Liquid

### Concentration

1 mg/mL

### Storage

EMX2 antibody can be stored at 4°C for three months and -20°C, stable for up to one year. As with all antibodies care should be taken to avoid repeated freeze thaw cycles. Antibodies should not be exposed to prolonged high temperatures.

### Note

For research use only

### Application notes

EMX2 antibody can be used for detection of EMX2 by Western blot at 1 - 2 µg/mL. Antibody can also be used for immunohistochemistry starting at 2.5 µg/mL. For immunofluorescence start at 20 µg/mL. Antibody validated: Western Blot in human samples; Immunohistochemistry in human samples and Immunofluorescence in human samples. All other applications and species not yet tested.

### Isotype

IgG

### Clonality

Polyclonal

### Uniprot ID

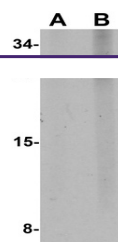
[Q04743](#)

### NCBI

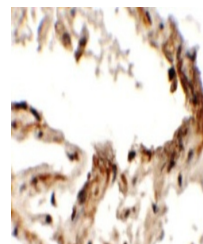
[Q04743](#)

### Dilution Range

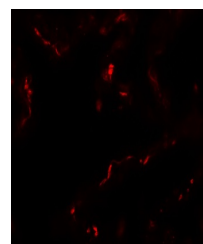
EMX2 antibody can be used for detection of EMX2 by Western blot at 1 - 2 µg/mL. Antibody can also be used for immunohistochemistry starting at 2.5 µg/mL. For immunofluorescence start at 20 µg/mL. Antibody validated: Western Blot in human samples; Immunohistochemistry in human samples



Western blot analysis of EMX2 in human l...



Immunohistochemistry of EMX2 in human lu...



Immunofluorescence of EMX2 in human lung...