

Product Datasheet

ENC1 Antibody (orb1239837)

Description

ENC1 Antibody

Species/Host

Gallus

Reactivity

Human, Mouse, Rat

Conjugation

Unconjugated

Tested

ELISA, IF, IHC-P, WB

Applications

Immunogen

ENC-1 antibody was raised against a 13 amino acid synthetic peptide near the center of human ENC-1. The immunogen is located within amino acids 230 - 280 of ENC-1.

Target

ENC1

Preservatives

ENC-1 Antibody is supplied in PBS containing 0.02% sodium azide.

Form/Appearance

Liquid

Concentration

1 mg/mL

Storage

ENC-1 antibody can be stored at 4°C for three months and -20°C, stable for up to one year. As with all antibodies care should be taken to avoid repeated freeze thaw cycles. Antibodies should not be exposed to prolonged high temperatures.

Note

For research use only

Application notes

ENC-1 antibody can be used for detection of ENC-1 by Western blot at 1 µg/mL. Antibody can also be used for immunohistochemistry starting at 5 µg/mL. For immunofluorescence start at 20 µg/mL. Antibody validated: Western Blot in mouse samples; Immunohistochemistry in rat samples and Immunofluorescence in rat samples. All other applications and species not yet tested.

Isotype

IgY

Clonality

Polyclonal

Uniprot ID

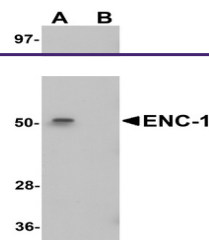
O14682

NCBI

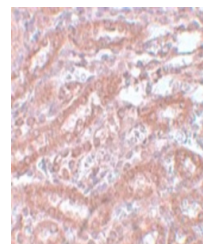
O14682

Dilution Range

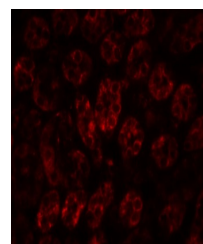
ENC-1 antibody can be used for detection of ENC-1 by Western blot at 1 µg/mL. Antibody can also be used for immunohistochemistry starting at 5 µg/mL. For immunofluorescence start at 20 µg/mL. Antibody validated: Western Blot in mouse samples; Immunohistochemistry in rat samples and



Western blot analysis of ENC-1 in mouse ...



Immunohistochemistry of ENC-1 in rat kid...



Immunofluorescence of ENC-1 in rat kidne...