

Product Datasheet

RAPGEF3 Antibody (orb1239833)

Description

RAPGEF3 Antibody

Species/Host

Rabbit

Reactivity

Human, Mouse, Rat

Conjugation

Unconjugated

Tested

ELISA, IF, IHC-P, WB

Applications

Immunogen

EPAC1 antibody was raised against an 18 amino acid synthetic peptide near the amino terminus of human EPAC1. The immunogen is located within amino acids 60 - 110 of EPAC1.

Target

RAPGEF3

Preservatives

EPAC1 Antibody is supplied in PBS containing 0.02% sodium azide.

Form/Appearance

Liquid

Concentration

1 mg/mL

Storage

EPAC1 antibody can be stored at 4°C for three months and -20°C, stable for up to one year. As with all antibodies care should be taken to avoid repeated freeze thaw cycles. Antibodies should not be exposed to prolonged high temperatures.

Note

For research use only

Application notes

EPAC1 antibody can be used for detection of EPAC1 by Western blot at 1 µg/mL. Antibody can also be used for immunohistochemistry starting at 2.5 µg/mL. For immunofluorescence start at 20 µg/mL. Antibody validated: Western Blot in rat samples; Immunohistochemistry in rat samples and Immunofluorescence in rat samples. All other applications and species not yet tested.

Isotype

IgG

Clonality

Polyclonal

Uniprot ID

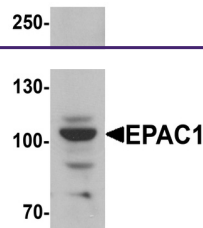
[O95398](#)

NCBI

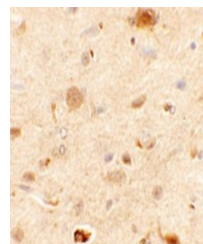
[NP_001092001](#)

Dilution Range

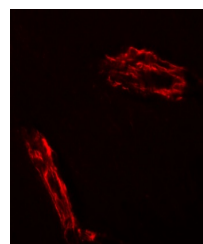
EPAC1 antibody can be used for detection of EPAC1 by Western blot at 1 µg/mL. Antibody can also be used for immunohistochemistry starting at 2.5 µg/mL. For immunofluorescence start at 20 µg/mL. Antibody validated: Western Blot in rat samples; Immunohistochemistry in rat samples and



Western blot analysis of EPAC1 in rat skin...



Immunohistochemistry of EPAC1 in rat brain...



Immunofluorescence of EPAC1 in rat brain...